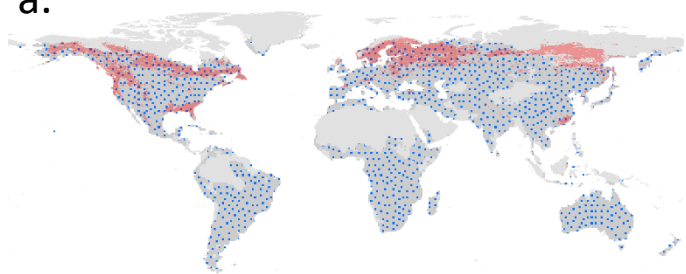
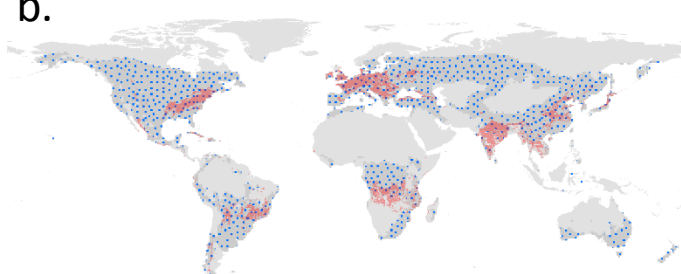


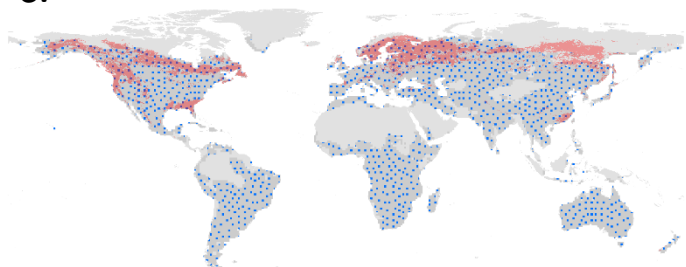
a.



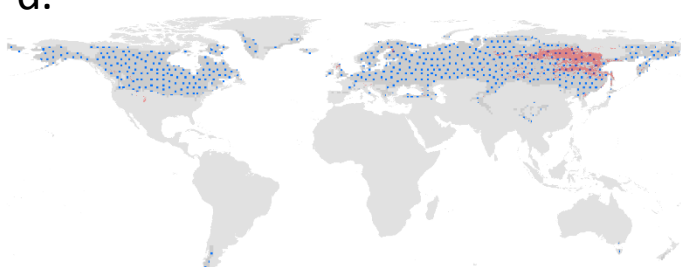
b.



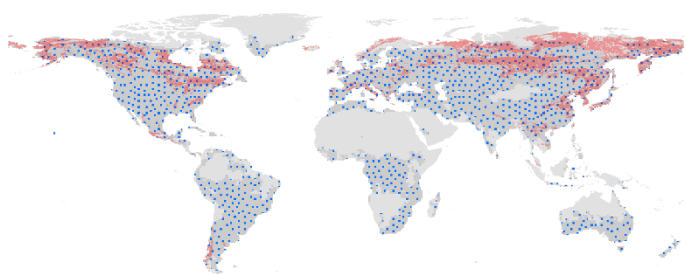
c.



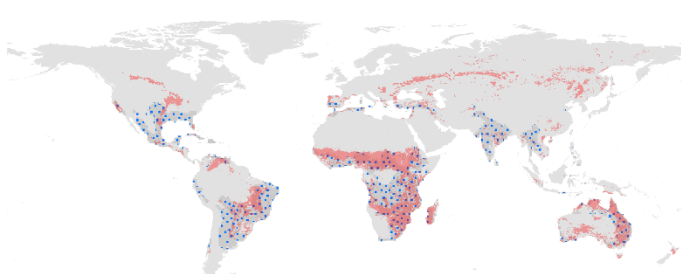
d.



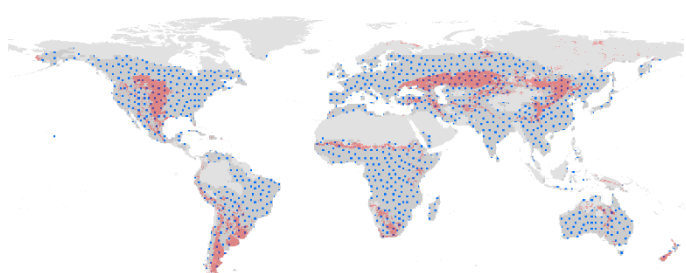
e.



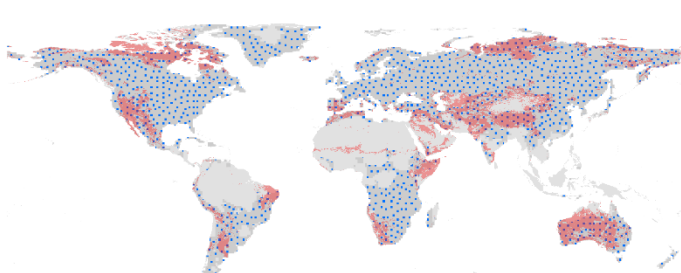
f.



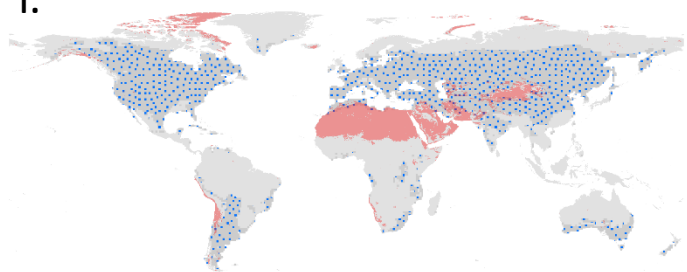
g.



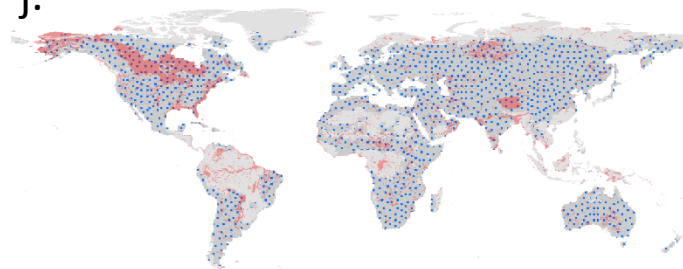
h.



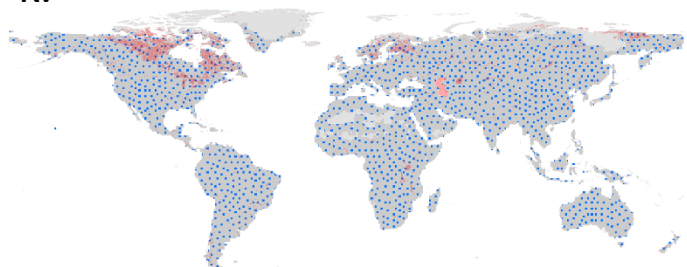
i.



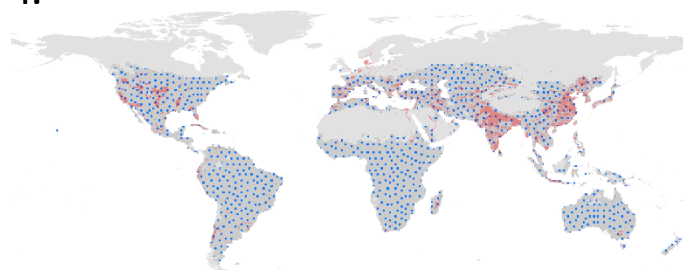
j.



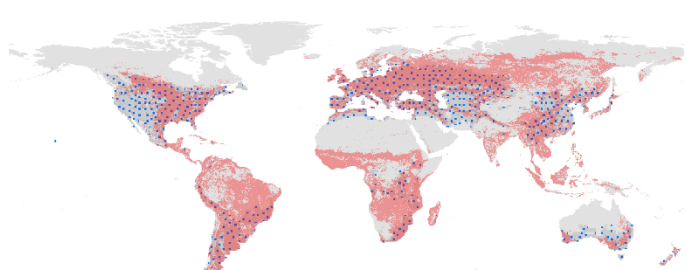
k.



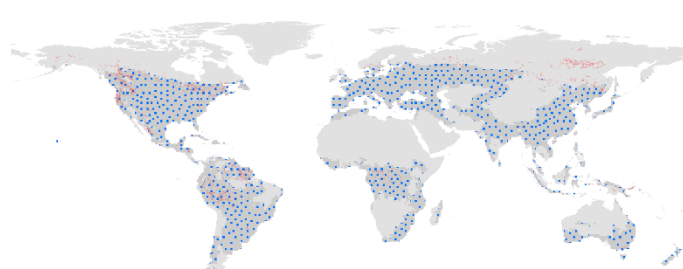
l.



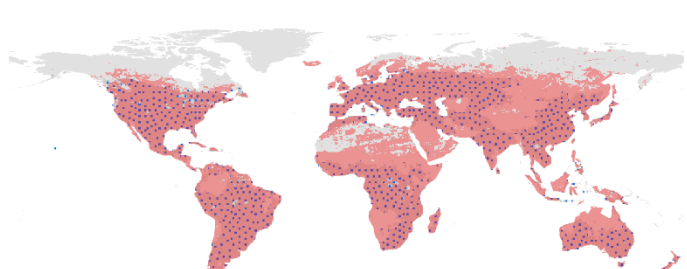
m.



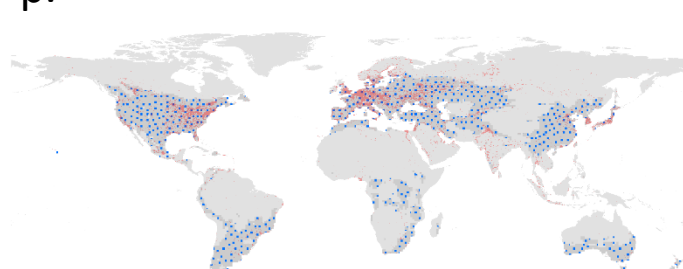
n.



o.



p.



Supplementary Information D. Global plots of areas where ET_LMM projections are outside the ranges of independent predictors captured by ET_OBS. The range of the presence/absence LC's used to mask ET_LMM are in red. Blue dots represent areas for which the values of all three independent predictors (temperature, precipitation, short wave radiation) are equal to the range of the three independent predictors overlying the ET_OBS points. a. ENF, b. DBF, c. ENF, d. DNF, e. MXF, f. SAV, g. GRS, h. SHR, i. BAR, j. WTL, k. LAK, l. CRI, m. CRN, n. TPL, o. GRZ p. HMO.