

This discussion paper is/has been under review for the journal Hydrology and Earth System Sciences (HESS). Please refer to the corresponding final paper in HESS if available.

Water savings potentials of irrigation systems: dynamic global simulation

J. Jägermeyr¹, D. Gerten¹, J. Heinke^{1,2,3}, S. Schaphoff¹, M. Kummu⁴, and W. Lucht^{1,5}

¹Research Domain Earth System Analysis, Potsdam Institute for Climate Impact Research (PIK), Telegraphenberg A62, 14473 Potsdam, Germany

²International Livestock Research Institute (ILRI), P.O. Box 30709, Nairobi, 00100, Kenya

³Commonwealth Scientific and Industrial Research Organization (CSIRO), St. Lucia, QLD 4067, Australia

⁴Water and development research group, Aalto University, Espoo, Finland

⁵Geography Department, Humboldt-Universität zu Berlin, Unter den Linden 6, 10099 Berlin, Germany

Received: 6 March 2015 – Accepted: 11 March 2015 – Published: 1 April 2015

Correspondence to: J. Jägermeyr (jonas.jaegermeyr@pik-potsdam.de)

Published by Copernicus Publications on behalf of the European Geosciences Union.

3593

Abstract

Global agricultural production is heavily sustained by irrigation, but irrigation system efficiencies are often surprisingly low. However, our knowledge of irrigation efficiencies is mostly confined to rough indicative estimates for countries or regions that do not account for spatio-temporal heterogeneity due to climate and other biophysical dependencies. To allow for refined estimates of global agricultural water use, and of water saving and water productivity potentials constrained by biophysical processes and also non-trivial downstream effects, we incorporated a dynamic representation of the three major irrigation systems (surface, sprinkler, and drip) into a process-based bio- and agrosphere model, LPJmL. Based on this enhanced model we provide a gridded worldmap of dynamically retrieved irrigation efficiencies reflecting differences in system types, crop types, climatic and hydrologic conditions, and overall crop management. We find pronounced regional patterns in beneficial irrigation efficiency (a refined irrigation efficiency indicator accounting for crop-productive water consumption only), due to differences in these features, with lowest values (< 30%) in South Asia and Sub-Saharan Africa and highest values (> 60%) in Europe and North America. We arrive at an estimate of global irrigation water withdrawal of 2396 km³ (2004–2009 average); irrigation water consumption is calculated to be 1212 km³, of which 511 km³ are non-beneficially consumed, i.e. lost through evaporation, interception, and conveyance. Replacing surface systems by sprinkler or drip systems could, on average across the world's river basins, reduce the non-beneficial consumption at river basin level by 54 and 76%, respectively, while maintaining the current level of crop yields. Accordingly, crop water productivity would increase by 9 and 15%, respectively, and by much more in specific regions such as in the Indus basin. This study significantly advances the global quantification of irrigation systems while providing a framework for assessing potential future transitions in these systems. Here presented opportunities associated with irrigation improvements are

3594

significant and suggest that they should be considered an important means on the way to sustainable food security.

1 Introduction

A major humanitarian challenge for the 21st century is to feed a growing world population in face of climate change and sustainability boundaries (e.g. Foley et al., 2011). In addition to requiring institutional changes, global crop production is likely to have to double to meet the demand by 2050 (Tilman et al., 2011; Alexandratos and Bruinsma, 2012; Valin et al., 2014). At present, irrigation is a key component of agriculture; global cereal production would decrease by 20 % without irrigation (Siebert and Döll, 2010), and climate change and population growth will further enhance its role in future (Neumann et al., 2011; Plusquellec, 2002). In the past 50 years irrigated area roughly doubled (FAO, 2012; Siebert et al., 2015) and today about 24 % of the total harvested cropland is irrigated, producing > 40 % of the global cereal yield (Portmann et al., 2010). Irrigation is the single largest global freshwater user, accounting for ~ 70 % of water withdrawals and 80–90 % of water consumption (Gleick et al., 2009).

However, as the planetary boundaries for freshwater use and land use are being approached rapidly or are already exceeded, there is little potential for increasing irrigation or expanding cropland (Steffen et al., 2015; Gerten et al., 2013). Thus, production gaps must be closed by sustainable production increases and higher cropping intensities on currently harvested land by either increasing rainfed yields or optimizing the water productivity of irrigated cropping systems and ecologically sensitive transforming rainfed systems into irrigated systems (Alexandratos and Bruinsma, 2012).

Indeed, current irrigation efficiencies are often below 50 %, as much of the diverted water is lost in the conveyance system or through inefficient application to the plants. The magnitude of these losses is determined primarily by the irrigation system (e.g. sprinkler, surface, drip) but also by meteorological and other environmental

3595

conditions. At first glance, the often low efficiency suggests a high potential for water savings. However, only water that leaves the system without a benefit for crop growth, such as evaporation from bare soil and other non-beneficial components (e.g. weed transpiration, Fig. 1), should be considered a manageable loss (e.g., Keller and Keller, 1995). As the different water fluxes are difficult to separate empirically, non-beneficial consumption remains a poorly measured and studied element of the irrigation water balance (Gleick et al., 2011) and associated specific saving potentials are largely neglected in discussions on irrigation improvements (e.g. Perry et al., 2009; Frederiksen and Allen, 2011; Simons et al., 2015). Also, while reducing non-beneficially consumed water clearly enables local yield increases using the same amount of water (Luquet et al., 2005; Molden et al., 2010; Al-Said et al., 2012), it inevitably reduces return flows as well. This can have mid-term negative effects on crop production through faster soil water depletion or less available water for downstream users (Ward and Pulido-Velazquez, 2008). The net effect at the basin level, accounting for downstream effects, is difficult to track with current methods (Nelson et al., 2010; Jia, 2012; Perry and Hellegers, 2012; Simons et al., 2015).

These non-trivial dynamics currently revive an earlier debate on the water saving potential of irrigation improvements (Seckler, 1996; Cooley et al., 2008; Ward and Pulido-Velazquez, 2008; Perry et al., 2009; Pfeiffer and Lin, 2009; Christian-Smith et al., 2012; Brauman et al., 2013; Pfeiffer and Lin, 2014; Simons et al., 2015). Previous studies of water saving potentials may have been too pessimistic, as they implicitly assume that total irrigation water consumption is beneficial (Burt et al., 1997; Perry et al., 2009; Simons et al., 2015). Furthermore, estimates of irrigation efficiencies are mostly based on rough assumptions for regions or countries, without dynamic quantitative water accounting. Advanced estimates of global agricultural water consumption, of water saving and water productivity potentials at basin level require a dynamic simulation of irrigation systems, spatially explicit and in direct coupling with vegetation dynamics, climate and other biophysical dependencies.

In global agro-hydrological models irrigation systems are insufficiently represented in this regard. For instance, many models only consider net irrigation requirements without accounting for water losses during conveyance or application (Haddeland et al., 2006; Siebert and Döll, 2010; Stacke and Hagemann, 2012; Elliott et al., 2015). Others
 5 employ globally constant indicative efficiency values from e.g. Brouwer et al. (1989), as a static input (e.g. Wriedt et al., 2009; Wada et al., 2013). These estimates were regionalized for the dominant irrigation system in each country by Rohwer et al. (2007) and since have been often referred to (e.g., Rost et al., 2009; Wriedt et al., 2009; Wada et al., 2011a; Schmitz et al., 2013; Chaturvedi et al., 2013; Elliott et al., 2014), but
 10 until today they remain rough indicative estimates. Assessments of future irrigation water requirements under climate change also have been carried out using static and country-based efficiencies, without accounting for local biophysical conditions (Fischer et al., 2007; Konzmann et al., 2013; Elliott et al., 2014). Sauer et al. (2010) endogenously determined the irrigation system based on biophysical and
 15 socioeconomic factors, but water fluxes are not simulated. To our knowledge, besides LPJmL (see below), PCR-GLOBWB is the only global model that calculates daily evapotranspiration and percolation losses per unit crop area based on surface and soil water balance, yet only for two crop classes without partitioning beneficial and non-beneficial water consumption (Wada et al., 2014).

20 With the aim of studying global irrigation systems based on an integrated, dynamic, and process-based approach, we implement a representation of the three major irrigation systems (surface, sprinkler, and drip) for various crop functional types (CFT) into the dynamic global bio-agrosphere model LPJmL. The new irrigation module goes beyond previous global modeling studies and replaces an existing scheme that is
 25 based on static efficiencies (Rost et al., 2008). It explicitly takes into account the daily surface and soil water balance (potentially limiting water withdrawal) and partitions irrigation water fluxes into transpiration (T), soil evaporation (E), interception loss (I), surface and subsurface runoff (R) and deep percolation (Dr), depending on daily weather conditions. Furthermore, we develop a new global dataset on the distribution

3597

of irrigation systems for each CFT at the 0.5° grid-level by combining AQUASTAT data on irrigation system distribution, cropland extent, and irrigation suitability.

Based on this data and modeling framework, we first present spatially explicit, dynamically retrieved global distribution of irrigation efficiency estimates based on
 5 a new, more precisely defined indicator: beneficial irrigation efficiency (E_b). Second, we provide new estimates for irrigation water components on the basis of significantly more spatial, temporal and process details compared to previous studies. Third, we investigate at basin level how much non-beneficially consumed water could be saved, and by how much crop water productivity could be increased, if irrigation system
 10 efficiencies were improved.

2 Methodology

2.1 Definition of irrigation efficiency

Irrigation efficiencies (E_i) are difficult to compare between studies, because there are various approaches to their definition and field measurements are difficult to assess
 15 (Burt et al., 1997; Perry et al., 2009). The generic definition is as follows (e.g. Bos and Nugteren, 1990; Seckler et al., 2003; Jensen, 2007):

$$E_i = \frac{W_c}{W_d}, \quad (1)$$

where W_c is water consumption (evaporation from soil and water surfaces, transpiration, and interception) and W_d is water withdrawal, i.e. the amount of water
 20 diverted from rivers, reservoirs, lakes, or groundwater. The remainder, the non-consumed water, is the return flow (W_r), i.e. surface and lateral runoff and drainage or deep percolation. It thus equals the difference between diverted and depleted water (Lankford, 2006). Note that while in reality not all return flow is recoverable (due to

3598

simulating daily water and carbon fluxes in direct coupling with the establishment, growth, and productivity of major natural and agricultural plant types.

Spatio-temporal distribution of natural vegetation, represented through 9 plant functional types (PFTs), is dynamically simulated based on climatic and carbon dioxide forcing (Sitch et al., 2003). Agricultural land is represented by 12 specified CFTs, a class “others” including a suite of crops collectively parameterized as annual crops, and pastures (Bondeau et al., 2007), all either irrigated or rainfed. The spatial distribution of CFTs and their irrigated fraction is prescribed (see Sect. 2.5).

Photosynthesis modeling in LPJmL follows a modified Farquhar et al. (1980) approach and daily crop carbon assimilation is allocated to harvestable storage organs (e.g. cereal grain) and three other pools (roots, leaves, stems). Sowing dates are dynamically calculated based on climatic and crop conditions (Waha et al., 2012). Crops are harvested when they reach maturity, defined either through a CFT-specific maximum value of daily accumulated phenological heat units or expiration of the growing season. Storage organs are subsequently removed from the field. Root growth and distribution within soil layers is CFT-specific, while the soil profile is discretized into 5 hydrologically active layers and bedrock (Schaphoff et al., 2013).

Plant growth is currently not directly nutrient-limited in LPJmL, yet constrained by temperature, radiation, water and atmospheric CO₂ concentration. We calibrate crop yields with national FAO statistics based on three dynamic model parameters (as in Fader et al., 2010) to account for CFT-specific management intensities.

LPJmL partitions precipitation (prec) and applied irrigation water into interception, transpiration, soil evaporation, soil moisture, and runoff. Infiltration rate of the surface soil layer is a function of the saturation level (Eq. A1). Surplus water that cannot infiltrate (iteratively in 4 mm slugs) generates surface runoff. Subsurface soil water above saturation runs off in lateral direction, while remaining soil water above field capacity (W_{fc}) percolates to the layer beneath, depending on its soil water content and hydraulic conductivity. Globally, 13 soil types are differentiated, according to their water holding capacity (WHC), hydraulic conductivity and soil texture (Schaphoff et al., 2013).

3601

Surface and lateral runoff and seepage groundwater runoff, which is the percolation from the bottom soil layer, are added to cell runoff and are subsequently available for downstream reuse, routed along the river network.

Beneficial water consumption, i.e. transpiration, is calculated as the minimum of atmospheric demand (D), equal to potential evapotranspiration (PET) in the absence of water constraints, and actual root-available soil water constrained by plant hydraulic traits (supply S). PET is computed after Priestley–Taylor but modified by above-plant boundary layer dynamics (Gerten et al., 2007). If D exceeds S , crops begin to experience water stress (Eqs. A1 and A2). Evaporation is a function of PET, soil water content in the upper 30 cm, vegetated soil cover and radiation energy (Eq. A3). Interception loss (I) is a function of leaf area index (LAI), the daily fractional vegetation coverage, leaf wetness, and PET (see Eqs. 9 and 10 below).

Moreover, we account for household, industry and livestock water use (HIL, assumed to be consumed prior to any irrigation; see Sect. 2.5) and include a representation of dams and reservoirs to improve the simulation of available surface water (Biemans et al., 2011).

Thus, water fluxes are simulated in considerable detail, in direct dynamic coupling with vegetation dynamics, and responsive to climatic conditions. LPJmL is therefore well suited for studying water fluxes associated with differentiated irrigation systems in an internally consistent and process-based manner.

2.3 Implementation of the new irrigation scheme

We implement the three major irrigation systems – surface, sprinkler, and drip – according to their generic characteristics in direct coupling to the model’s soil water balance, which overcomes the earlier scheme of nationally fixed efficiencies as in (Rost et al., 2008). Irrigation systems differ in the way they distribute water across the field. Surface systems (basin and furrow combined) flood the field, sprinkler uses pressurized sprinkler nozzles and micro/drip is the most cost-intensive system using localized water application directly to the plants’ root zone. Indicative efficiency

3602

In addition to the current distribution of irrigation systems, we ran three synthetic scenarios to investigate the global performance of each system and to provide an estimate of the effect of irrigation system transitions. In these scenarios (hereinafter: All-Surface, All-Sprinkler, All-Drip) it is assumed that each system is respectively applied on the entire global irrigated area.

3 Results

3.1 Global patterns of irrigation efficiency

51 % of total global diverted irrigation water is simulated to be consumed (mean global area-weighted $E_i = 56\%$) and 29 % are beneficially consumed, i.e. transpired (mean global area-weighted $E_b = 34\%$), following our dynamic implementation. In Fig. 4 we show global spatial patterns of E_b , which are to a large extent determined by the irrigation system in use (Fig. 3), but as importantly, by its performance under local biophysical conditions and the present crop type. Extensive regions in Central, South, and South-East Asia with high shares of surface irrigation (widespread rice cultivation) show low efficiency values of $< 30\%$. North China plains with high irrigation intensity and mainly maize and wheat varieties exceed 50 %, but particularly Europe and North America stand out with values well above the global average due to relatively high shares of sprinkler and drip systems. The latter also applies to Brazil, South Africa and the Ivory Coast, where E_b exceeds 60 %. To illustrate system performances unaffected by their current geographical distributions, Fig. 5 displays E_b for the three irrigation systems separately, each assumed to be applied on all irrigated areas. Under this condition, global average values of E_b for surface, sprinkler and drip systems are 30, 52, and 73 %, respectively. Across all three scenarios, we find a remarkable low efficiency in Pakistan, North-East India and Bangladesh, opposed to above-average levels in the Mediterranean region, North China Plains and the US Great Plains. Moreover, E_b varies considerably between crop types due to different plant physiology

3607

and different cultivation regions/climate zones (Fig. 6; see next section). The values for maize, sugarcane and temperate roots are above the average across CFTs in our simulation, while rice, pulses, and rapeseed form the lower end. E_b is also sensitive to precipitation, soil properties and other biophysical factors, as characterized in Sect. 3.4.

3.2 Global irrigation water fluxes

Global irrigation water withdrawals simulated with the new irrigation scheme are 2396 km^3 per year, averaged for the time period 2004–2009. 1184 km^3 return to the river system, while 1212 km^3 are consumed (1413 km^3 including consumption from non-agricultural sectors HIL), of which 701 km^3 are beneficially consumed, i.e. transpired by crops (Table 3). The remainder, 511 km^3 , is non-beneficially consumed and is indicative of the substantial water saving potentials associated with irrigation improvements (see Sect. 3.3 for details).

Figure 6 illustrates the decomposition of irrigation water fluxes for each CFT and all three irrigation systems. Transpiration is relatively constant across irrigation systems (irrigation target). However, on global average, drip systems achieve 7 % less transpiration (Table 3). This result reflects that drip irrigation systems generally do not aim to saturate the soil and thus conduct a modest form of deficit irrigation not designed to maximize yields but to save water.

Return flow with surface irrigation forms the major part of non-beneficial fluxes, exceeding by a factor of two the non-beneficial consumption (evaporation from soil and water surfaces). Sprinkler systems have a considerably lower return flow fraction (67 % difference between All-Surface to All-Sprinkler) and contribute only 13 % of withdrawals in the All-Drip scenario. Conveyance losses are significantly lower with sprinkler or drip systems due to pressurized conveyance. Evaporation losses are relatively similar between surface and sprinkler systems, while drip systems show lower losses due to their system design. Interception losses with sprinkler systems (surface and drip apply water below canopy) form only a minor contribution to non-beneficial fluxes (Fig. 6).

3608

3.3 Potential of irrigation system transitions

We simulated three theoretical “all-one-type” scenarios to investigate the global potential of irrigation system transitions. Replacing a surface system by sprinkler or drip systems could, on average, reduce the target value – non-beneficial consumption – by 52 and 75 %, respectively, while maintaining yield production at the global level (indicated by W_{bc} in Table 3). Withdrawal amounts would decrease by 45 and 79 %, and return-flows by 63 and 91 %, respectively.

While upgrades of irrigation systems thus appear to be beneficial locally and mostly easing water diversion, major reductions of return flows can also have negative local impacts on downstream users. To evaluate the net effect along rivers and identify river basins that are most sensitive to irrigation improvements, we assessed water saving potentials and changes in water productivity at river basin level for each transition scenario.

Currently, the ratio of non-beneficial consumption to total consumption is particularly high in some South Asian basins (Indus, Ganges, Mahanadi), Korea, the Sahel, and Madagascar (Fig. 7a). A transition from surface to sprinkler or drip systems is simulated to cause a distinct reduction in non-beneficial consumption mainly in these very regions, but also in temperate regions in Europe, North America, the Yangtze basin, Brazil, Argentina and South Africa (Fig. 7c and e). Mean basin-level reductions in non-beneficial consumption would amount to 54 % when moving from surface to sprinkler systems and 76 % when moving to drip systems (Table 4).

Current global mean water productivity is simulated to be 2.83 kcal L^{-1} , but with very distinct regional patterns (Fig. 7b) due to a combination of many factors, mainly heterogeneous crop management intensities and current distribution of irrigation systems. We find a strong gradient from very low values ($< 2 \text{ kcal L}^{-1}$) in Central America, Sub-Saharan Africa and South Asia, to medium levels in East Asia and high values of $4\text{--}5 \text{ kcal L}^{-1}$ across North America and Europe. Replacing a surface system by a sprinkler or drip system would increase crop water productivity by (globally

3609

averaged) 9 and 15 %, respectively (Table 4). In individual basins, e.g. in extensive regions in Central and South Asia, Mediterranean region and the Nile, in the Sahel, in South Africa and in the Colorado basin, effects would be even more pronounced: at basin level production increases of 20 % (sprinkler) and 30 % (drip) would be attained (Fig. 7d and f).

Moreover, we show explicitly that transpiration and total water consumption do not form a one-to-one relation, as is often argued when discussing the potential of irrigation transitions (e.g. Perry et al., 2009). Surface, sprinkler or drip systems follow individual slopes, disclosing saving potential (Fig. 8). Overall, this pilot analysis of irrigation system transitions shows that water saving potentials and water productivity improvements could be significant in many regions, on local farms and across basins.

3.4 Evaluation of simulation results

Our estimates of global irrigation water withdrawal and consumption (W_d : 2396 km^3 , W_c : 1212 km^3) agree well with previously published, but not always state-of-the-art estimates. Country statistics for W_d reported for the period 1998–2012 are 2722 km^3 (FAO, 2014), while model estimates range between 2217 and 3185 km^3 (Wada and Bierkens, 2014; Döll et al., 2014, 2012; Siebert and Döll, 2010; Wada et al., 2011b; Alexandratos and Bruinsma, 2012). Estimates for W_c range from 927 to 1530 km^3 (Hoff et al., 2010; Chaturvedi et al., 2013; Döll et al., 2014). Döll et al. (2012) concludes that 1179 km^3 (Wada and Bierkens, 2014, 1098 km^3) stem from surface water and an additional $257 \text{ km}^3 \text{ yr}$ from groundwater resources. This is supported by Wada et al. (2012), who also point out that non-renewable groundwater abstractions are expected to contribute 20 % to the global GIR. In this study we did not account for fossil groundwater and desalination. However, 80 % of groundwater abstractions are assumed to be recharged by return flows (Döll et al., 2012), thus it is plausible that W_d as simulated here is somewhat lower than in studies that simulate (fossil) groundwater

3610

contributions. It is also important to point out that irrigation water estimates are sensitive to the precipitation database employed (Wada et al., 2014).

Irrigation efficiencies are difficult to validate due to nonhomogeneous definitions and problems in its measurement in the field. Nevertheless, in Table 5 we put our results into the context of comparable literature results. At the global level, we meet established indicative estimates of field application efficiency by Brouwer et al. (1989). These have been downscaled to the country level by Rohwer et al. (2007) and the area-weighted global mean is 49, 69, and 90% for the three systems, respectively. Another independent estimate of field efficiency at the sub-continent level is provided by Sauer et al. (2010) with global mean values of 42, 78, and 89%. Our estimates are well in line with these numbers, although some regional patterns from Sauer et al. (2010) are not represented in our results (Table 5). They find very low surface irrigation efficiencies in MENA and SSA, while we arrive at slightly above-average values in MENA and particularly low values in South Asia, which is supported by Döll and Siebert (2002) and Rosegrant et al. (2002). For Malaysia, e.g. Ali et al. (2000) confirms below-average values. Furthermore, our estimates of global water productivity agree very well with previous estimates (e.g. Brauman et al., 2013; Zwart and Bastiaanssen, 2004; Rosegrant et al., 2002). Overall, the performance of our new irrigation model is well in line with the patterns reported in previous studies (while being much more detailed in terms of process representation, spatial and temporal patterns), rendering this implementation operational.

Simulated irrigation water fluxes (and thus efficiency patterns) depend on a multitude of factors: crop type, local climatic conditions (e.g. prec, PET), crop phenology, LAI, length of the growing season, and soil parameters. With correlation analyses (Fig. 9), we show that water fluxes from each simulated irrigation system follow reasonable biophysical dependencies, in spite of a multitude of confounding processes. For instance, return flow mainly depends on prec and WHC; WHC is more relevant for surface systems, while prec appears to be most decisive for drip systems. Aboveground biomass affects soil evaporation negatively and interception losses

3611

positively. Precipitation during the growing season can lead to leaching of soil water that originated from irrigation, which can oppress efficiency indicators. Geographical patterns in the ratio of non-beneficial consumption (Fig. 7a) and of return flow determine gradients in irrigation efficiency (Fig. 5), which are thus plausible from a biophysical perspective.

4 Discussion

4.1 Significance of results

This study presents for the first time spatially and temporally explicit estimates of irrigation system performances (separately for the world's major crop types) at the global level, based on dynamic simulation of underlying local biophysical conditions. Hence, this study advances the global quantification of irrigation systems while providing a framework for assessing potential future transitions in these systems as likely required in view of projected increases in world food demand. Our global irrigation water estimates and regional efficiency values are well in line with existing literature, but we find distinct spatial patterns that were not available before with such level of spatial, temporal, and process detail. Generally, it has been assumed that economic and agronomic drivers control spatial patterns of irrigation efficiencies (e.g. Sauer et al., 2010; Schmitz et al., 2013). Here we show that biophysical factors additionally have non-trivial effects on spatial patterns of system efficiencies.

Moreover, we show that enhanced irrigation techniques offer substantial opportunities to reduce irrigation water consumption while maintaining beneficial transpiration rates and, thus, crop production levels at the river basin level. We also identify river basins in South Asia, in the Mediterranean region, and the Sahel to be most sensitive to irrigation improvements as resulting from the combination of local crop types, climate and soil conditions and the current irrigation system. These findings contribute to the current debate on global opportunities associated with irrigation

3612

systems and results suggest that irrigation improvements are an important contribution to sustainably increase food production (among various other means, e.g. Kummu et al., 2012; Jalava et al., 2014). The new implementation is a prerequisite for follow-up studies of global crop production and yields under changing climate, production potentials of irrigation system transitions and expansions, and climate change impacts on irrigation efficiencies and demands.

4.2 Modeling issues

Previous LPJmL estimates of W_d and W_c (Rost et al., 2008; Konzmann et al., 2013) are now improved with this study. Those earlier estimates tended to be lower than comparative studies, because first, the extent of irrigated land was scaled down for reasons of multi-cropping (see Fader et al., 2010, for details). Second, we believe that the new implementation accounts for a more realistic simulation of irrigation fluxes and the soil water balance, which on the one hand increases water demands, and on the other hand improves discharge dynamics, in that applied irrigation water percolates through soil layers and runoff rates are more realistically delayed.

Generally, not all of the area equipped for irrigation is being irrigated every year, especially where supplementary irrigation is practiced. Such deficits can be considerable, mostly in temperate and humid regions (Siebert et al., 2010, 2015). We claim that they are mostly considered in our simulations as it is a key component of our irrigation module to dynamically trigger or pause the application of irrigation water based on soil water deficit and blue water availability. However, variations in irrigated area due to other reasons (not reflected in the land use input dataset) cannot be accounted for.

The CFT group “others” pools a variety of crops including perennial and annual types (e.g. cotton, citrus, coffee) but is generically parameterized as perennial grassland. Therefore, the growing season length for these crops is systematically overestimated, which may lead to somewhat too high estimates of total water use and demand. This potential overestimation might be counterbalanced by an overestimation of accessible

3613

return flow, as LPJmL cannot account for the fact that return flows are only partly recoverable (physically or economically), and that they are often degraded through nutrient leaching and salinity.

Irrigation can have other purposes than satisfying crop water requirements, like salt leaching, crop cooling, pesticide or fertilizer applications, or frost protection. These irrigation applications are however beyond the scope of this study and are not explicitly considered in the withdrawal demand. Salt leaching below the root zone, as for the most significant of those, is critical in regions with marginal precipitation and can be controlled through applying an additional 5–10 % irrigation water (Jensen, 2007). Figure 6 shows that in our implementation the runoff share with drip irrigation is, on average, large enough to meet this requirement.

Irrigation improvements can also be achieved by means other than completely replacing the system, e.g. through better scheduling (incorporating climate and soil data to precisely meet crop water demand), advanced management (deficit irrigation) and technical improvements. For instance, much water might be saved from evaporation and seepage if open canal conveyance systems were replaced by lined or pressurized installations. For the purpose of simplicity, in this study we bundle these various opportunities into the three different simulated generic systems and represent improvements through system transitions.

4.3 On irrigation system transitions

From a sustainability perspective, the primary objective in regions with irrigation overdraft is the reduction of irrigation water consumption. In face of a growing human population and various rapidly approaching planetary boundaries (Steffen et al., 2015), an immediate question thus is, by how much global crop water productivity and crop production can be improved with sustainably available water resources. Water saved through improved irrigation systems could allow either for an expansion of irrigated areas or for a production increase on irrigated yet water-limited farms. Throughout this paper we argue that the water saving potential is mostly constrained to the

3614

non-beneficially consumed fraction, as return flows are often accessible downstream. Egypt's Nile valley is an example of a multiple use-cycle system with a high basin-level efficiency but low local efficiencies (Keller and Keller, 1995).

5 Many authors thus argue that irrigation efficiencies add up close to 100% at the basin level and therefore assume that water saving potentials through efficiency improvements are very limited (Seckler, 1996; Perry et al., 2009; Frederiksen and Allen, 2011). These findings are based on an assumption that crop transpiration follows a one-to-one relation with water consumption (Perry et al., 2009); saving potentials within the consumed fraction are largely neglected. Herein, we show that transpiration and consumption are not as closely linked as previously assumed, and that adapting modern irrigation techniques can indeed bring this dependency closer to the one-to-one line (Fig. 8). Accordingly, we show that transpiration rates (hence crop production) can be maintained while cutting the consumed volume in many regions at the basin level.

15 However, the implementation of such technical water saving potential does not imply that necessarily less water would be diverted. Farmers' decisions are often driven by maximizing their return and rarely by environmental concerns; if they pursue efforts to save water, they often use it to expand their irrigated areas or shift to higher value crops, rather than loosening water allocations (Ward and Pulido-Velazquez, 2008; Perry and Hellegers, 2012; Pfeiffer and Lin, 2014; Shah, 2014). From a food security perspective, however, irrigation improvements drive water productivity and thus increase gross crop yield, consuming the same amount of water.

20 Nevertheless, increasing irrigation systems at the global scale while respecting sustainability boundaries, requires a complex combination of substantial investments, institutional water policy regulations, and cultural changes. Intelligent water pricing (currently rarely reasonable) is for instance a measure to achieve trade-offs at basin level through economic incentives (e.g. Molden, 2007; Molle and Berkoff, 2007; Ward and Pulido-Velazquez, 2008).

3615

Higher technology irrigation systems can have manifold co-benefits, e.g. improved crop quality, conserving nitrate groundwater concentration, reducing water logging, saving energy, and reducing greenhouse gas emissions (e.g. Gleick et al., 2011; Christian-Smith et al., 2012; Calderón et al., 2014). Low-cost drip systems for smallholder farmers can help alleviate poverty in poor regions (e.g. Postel et al., 2001; Kijne et al., 2009; World Bank, 2010; Dillon, 2011; Burney and Naylor, 2012). They can boost water productivity, but are likewise prone to misuse and salinization (Belder et al., 2007; Hillel, 2008; Comas et al., 2012).

10 Overall, this study suggests that the potential of irrigation improvements might be more substantial than often anticipated in recent discussions. Nonetheless, such investments should be combined with other measures available to sustainable intensification (e.g. mulching, reduced tillage, and rain-water harvesting).

5 Conclusions

15 This study presents for the first time spatially and temporally explicit estimates of global irrigation system performances for the world's major crop types, based on dynamic simulation of underlying local biophysical conditions. Hence, this study significantly advances the global quantification of irrigation systems while providing a framework for assessing potential future transitions in these systems. We arrive at an estimate of global annual irrigation water withdrawal of 2396 km³ (2004–2009); irrigation water consumption is calculated to be 1212 km³, of which 511 km³ are non-beneficially consumed. We find distinct spatial patterns in irrigation efficiency governed by biophysical conditions, which have been largely neglected in most previous studies. This new map of dynamically retrieved irrigation efficiencies is provided for incorporation into other global hydrological and agricultural studies, serving as a prerequisite e.g. for refined simulation of crop yields under conditions of future climate change and growing food demand. At the river basin level, i.e. accounting for downstream effects, we reveal, for many basins, the potential for sizeable reductions

3616

- for the 20th century global terrestrial carbon balance, *Glob. Change Biol.*, 13, 679–706, doi:10.1111/j.1365-2486.2006.01305.x, 2007. 3600, 3601
- Bos, M. and Nugteren, J.: On irrigation efficiencies, 4th edn., Tech. rep., International Institute for Land Reclamation and Improvement, Wageningen, Netherlands, 1990. 3598
- 5 Brauman, K. A., Siebert, S., and Foley, J. A.: Improvements in crop water productivity increase water sustainability and food security a global analysis, *Environ. Res. Lett.*, 8, 024030, doi:10.1088/1748-9326/8/2/024030, 2013. 3596, 3611
- Brouwer, C., Prins, K., and Heibloem, M.: Irrigation water management: irrigation scheduling, Training manual no. 4, Tech. Rep. 4, FAO Land and Water Development Division, Rome, Italy, 10 1989. 3597, 3603, 3611
- Burney, J. A. and Naylor, R. L.: Smallholder irrigation as a poverty alleviation tool in Sub-Saharan Africa, *World Dev.*, 40, 110–123, doi:10.1016/j.worlddev.2011.05.007, 2012. 3616
- Burt, C., Clemmens, A., Strelkoff, T., Solomon, K., Bliesner, R., Hardy, L., and Howell, T.: Irrigation performance measures: efficiency and uniformity, *J. Irrig. Drain. E.-ASCE*, 423–442, 15 1997. 3596, 3598, 3599
- Calderón, F., Oppenheimer, J., Stern, N., and Al, E.: Better growth, better climate – the new climate economy report – the synthesis report, Tech. rep., The Global Commission on the Economy and Climate, Washington, DC, 2014. 3616
- Chaturvedi, V., Hejazi, M., Edmonds, J., Clarke, L., Kyle, P., Davies, E., and Wise, M.: Climate mitigation policy implications for global irrigation water demand, *Mitigation and Adaptation Strategies for Global Change*, 20, 389–407, doi:10.1007/s11027-013-9497-4, 2013. 3597, 20 3610
- Christian-Smith, J., Cooley, H., and Gleick, P. H.: Potential water savings associated with agricultural water efficiency improvements: a case study of California, USA, *Water Policy*, 25 14, 194–213, doi:10.2166/wp.2011.017, 2012. 3596, 3616
- Comas, J., Connor, D., Isselmou, M. E. M., Mateos, L., and Gómez-Macpherson, H.: Why has small-scale irrigation not responded to expectations with traditional subsistence farmers along the Senegal River in Mauritania?, *Agr. Syst.*, 110, 152–161, doi:10.1016/j.agsy.2012.04.002, 2012. 3616
- 30 Cooley, H., Christian-Smith, J., Gleick, P. H., Allen, L., and Cohen, M.: More with less: agricultural water conservation and efficiency in California – a special focus on the delta, Tech. rep., Pacific Institute, Oakland, available at: [http://www.pacinst.org/](http://www.pacinst.org/reports/transboundary_waters/transboundary_water_and_climate_report.pdf)

3619

- reports/transboundary_waters/transboundary_water_and_climate_report.pdf (last access: 11 February 2015), 2008. 3596
- Dillon, A.: The effect of irrigation on poverty reduction, asset accumulation, and informal insurance: evidence from Northern Mali, *World Dev.*, 39, 2165–2175, 5 doi:10.1016/j.worlddev.2011.04.006, 2011. 3616
- Döll, P. and Siebert, S.: Global modeling of irrigation water requirements, *Water Resour. Res.*, 38, 8-1–8-10, doi:10.1029/2001WR000355, 2002. 3611
- Döll, P., Hoffmann-Dobrev, H., Portmann, F., Siebert, S., Eicker, A., Rodell, M., Strassberg, G., and Scanlon, B.: Impact of water withdrawals from groundwater and 10 surface water on continental water storage variations, *J. Geodyn.*, 59–60, 143–156, doi:10.1016/j.jog.2011.05.001, 2012. 3610
- Döll, P., Schmied, H., Schuh, C., Portmann, F., and Eicker, A.: Global-scale assessment of groundwater depletion and related groundwater abstractions: combining hydrological modeling with information from well observations and GRACE satellites, *Water Resour. Res.*, 50, 5698–5720, doi:10.1002/2014WR015595, 2014. 3610
- 15 Elliott, J., Deryng, D., Müller, C., Frieler, K., Konzmann, M., Gerten, D., Glotter, M., Flörke, M., Wada, Y., Best, N., Eisner, S., Fekete, B. M., Folberth, C., Foster, I., Gosling, S. N., Haddeland, I., Khabarov, N., Ludwig, F., Masaki, Y., Olin, S., Rosenzweig, C., Ruane, A. C., Satoh, Y., Schmid, E., Stacke, T., Tang, Q., and Wisser, D.: Constraints and potentials of future irrigation water availability on agricultural production under climate change, *P. Natl. Acad. Sci. USA*, 111, 3239–3244, doi:10.1073/pnas.1222474110, 2014. 3597
- 20 Elliott, J., Müller, C., Deryng, D., Chryssanthacopoulos, J., Boote, K. J., Büchner, M., Foster, I., Glotter, M., Heinke, J., Iizumi, T., Izaurralde, R. C., Mueller, N. D., Ray, D. K., Rosenzweig, C., Ruane, A. C., and Sheffield, J.: The Global Gridded Crop Model Intercomparison: data and modeling protocols for Phase 1 (v1.0), *Geosci. Model Dev.*, 8, 261–277, doi:10.5194/gmd-8-261-2015, 2015. 3597
- 25 Fader, M., Rost, S., Müller, C., Bondeau, A., and Gerten, D.: Virtual water content of temperate cereals and maize: present and potential future patterns, *J. Hydrol.*, 384, 218–231, doi:10.1016/j.jhydrol.2009.12.011, 2010. 3600, 3613
- 30 FAO: FAOstat, Food and Agricultural Organization, Rome, available at: [http://faostat3.fao.org/](http://faostat3.fao.org/home/index.html#HOME) home/index.html#HOME (last access: 18 October 2014), 2012. 3595

3620

- FAO: AQUASTAT database – food and agriculture organization of the United Nations (FAO), available at: <http://www.fao.org/nr/water/aquastat/data/query/index.html?lang=en> (last access: 18 October 2014), 2014. 3605, 3610
- 5 Fischer, G., Tubiello, F. N., van Velthuis, H., and Wiberg, D. A.: Climate change impacts on irrigation water requirements: effects of mitigation, 1990–2080, *Technol. Forecast. Soc.*, 74, 1083–1107, doi:10.1016/j.techfore.2006.05.021, 2007. 3597
- Fischer, G., Nachtergaele, F., Prieler, S., Teixeira, E., Tóth, G., van Velthuis, H., Verelst, L., and Wiberg, D.: Global Agro-ecological Zones (GAEZ v3.0), Tech. rep., IIASA/FAO, IIASA, Laxenburg, Austria and FAO, Rome, Italy, 2012. 3606, 3629
- 10 Flörke, M., Kynast, E., Bärlund, I., Eisner, S., Wimmer, F., and Alcamo, J.: Domestic and industrial water uses of the past 60 years as a mirror of socio-economic development: a global simulation study, *Global Environ. Chang.*, 23, 144–156, doi:10.1016/j.gloenvcha.2012.10.018, 2013. 3606
- Foley, J. A., Ramankutty, N., Brauman, K. A., Cassidy, E. S., Gerber, J. S., Johnston, M., Mueller, N. D., O'Connell, C., Ray, D. K., West, P. C., Balzer, C., Bennett, E. M., Carpenter, S. R., Hill, J., Monfreda, C., Polasky, S., Rockström, J., Sheehan, J., Siebert, S., Tilman, D., and Zaks, D. P. M.: Solutions for a cultivated planet, *Nature*, 478, 337–342, doi:10.1038/nature10452, 2011. 3595
- 15 Frederiksen, H. D. and Allen, R. G.: A common basis for analysis, evaluation and comparison of offstream water uses, *Water Int.*, 36, 266–282, doi:10.1080/02508060.2011.580449, 2011. 3596, 3615
- Gerten, D., Schaphoff, S., Haberlandt, U., Lucht, W., and Sitch, S.: Terrestrial vegetation and water balance hydrological evaluation of a dynamic global vegetation model, *J. Hydrol.*, 286, 249–270, doi:10.1016/j.jhydrol.2003.09.029, 2004. 3605, 3617
- 25 Gerten, D., Schaphoff, S., and Lucht, W.: Potential future changes in water limitations of the terrestrial biosphere, *Climatic Change*, 80, 277–299, doi:10.1007/s10584-006-9104-8, 2007. 3602, 3617
- Gerten, D., Hoff, H., Rockström, J., Jägermeyr, J., Kummu, M., and Pastor, A. V.: Towards a revised planetary boundary for consumptive freshwater use: role of environmental flow requirements, *Current Opinion in Environmental Sustainability*, 5, 551–558, doi:10.1016/j.cosust.2013.11.001, 2013. 3595
- 30

3621

- Gleick, P. H., Cooley, H., Cohen, M. J., Morikawa, M., Morrison, J., and Palaniappan, M.: *The World's Water 2008–2009: The Biennial Report on Freshwater Resources*, Island Press, Washington, DC, 2009. 3595
- 5 Gleick, P. H., Christian-Smith, J., and Cooley, H.: Water-use efficiency and productivity: rethinking the basin approach, *Water Int.*, 36, 784–798, doi:10.1080/02508060.2011.631873, 2011. 3596, 3616
- Haddeland, I., Skaugen, T., and Lettenmaier, D. P.: Anthropogenic impacts on continental surface water fluxes, *Geophys. Res. Lett.*, 33, L08406, doi:10.1029/2006GL026047, 2006. 3597
- 10 Harris, I., Jones, P. D., Osborn, T. J., and Lister, D. H.: Updated high-resolution grids of monthly climatic observations – the CRU TS3.10 Dataset, *Int. J. Climatol.*, 34, 623–642, doi:10.1002/joc.3711, 2014. 3606
- Hillel, D.: 40 years of drip irrigation – reviewing the past, prospects for the future, *Crops Soils*, 41, 38–42, 2008. 3616
- 15 Hoff, H., Falkenmark, M., Gerten, D., Gordon, L., Karlberg, L., and Rockström, J.: Greening the global water system, *J. Hydrol.*, 384, 177–186, doi:10.1016/j.jhydrol.2009.06.026, 2010. 3610
- Jalava, M., Kummu, M., Porkka, M., Siebert, S., and Varis, O.: Diet change a solution to reduce water use?, *Environ. Res. Lett.*, 9, 074016, doi:10.1088/1748-9326/9/7/074016, 2014. 3613
- 20 Jensen, M. E.: Beyond irrigation efficiency, *Irrigation Sci.*, 25, 233–245, doi:10.1007/s00271-007-0060-5, 2007. 3598, 3600, 3614
- Jia, S.: More grain in the North China Plain with less water consumed: a response to Chris Perry, *Water Int.*, 37, 337–340, 2012. 3596
- Keller, A. A. and Keller, J.: *Effective Efficiency: A Water Use Efficiency Concept for Allocating Freshwater Resources*, Publications of the Center for Economic Policy Studies Discussion, Arlington, VA, USA, 1995. 3596, 3600, 3615
- 25 Kijne, J., Barron, J., Hoff, H., and Rockström, J.: Opportunities to increase water productivity in agriculture with special reference to Africa and South Asia, Tech. rep., Stockholm Environmental Institute, 2009. 3616
- 30 Konzmann, M., Gerten, D., and Heinke, J.: Climate impacts on global irrigation requirements under 19 GCMs, simulated with a vegetation and hydrology model, *Hydrolog. Sci. J.*, 58, 88–105, doi:10.1080/02626667.2013.746495, 2013. 3597, 3613

3622

- Kummu, M., de Moel, H., Porkka, M., Siebert, S., Varis, O., and Ward, P. J.: Lost food, wasted resources: global food supply chain losses and their impacts on freshwater, cropland, and fertiliser use, *Sci. Total Environ.*, 438, 477–489, doi:10.1016/j.scitotenv.2012.08.092, 2012. 3613
- 5 Lankford, B.: Localising irrigation efficiency, *Irrig. Drain.*, 55, 345–362, doi:10.1002/ird.270, 2006. 3598
- Luquet, D., Vidal, A., Smith, M., and Dauzat, J.: 'More crop per drop': how to make it acceptable for farmers?, *Agr. Water Manage.*, 76, 108–119, doi:10.1016/j.agwat.2005.01.011, 2005. 3596
- 10 Meyers, J., Baird, C., and Choate, R.: Evaporation losses in sprinkler irrigation, Tech. Rep. 1968, Florida Water Resources Research Center, Gainesville, FL, USA, 1970. 3605
- Molden, D. (Eds.): *Water for Food, Water for Life: A Comprehensive Assessment of Water Management in Agriculture*, Earthscan, and Colombo, International Water Management Institute, London, 2007. 3615
- 15 Molden, D., Oweis, T., Steduto, P., Bindraban, P., Hanjra, M. A., and Kijne, J.: Improving agricultural water productivity: between optimism and caution, *Agr. Water Manage.*, 97, 528–535, doi:10.1016/j.agwat.2009.03.023, 2010. 3596
- Molle, F. and Berkoff, J. (Eds.): *Irrigation Water Pricing: The Gap Between Theory and Practice*, CAB International, Oxfordshire, UK, 2007. 3615
- 20 Nelson, G. C., Rosegrant, M. W., Palazzo, A., Gray, I., Ingersoll, C., Robertson, R., Tokgoz, S., and Zhu, T.: Food security, farming, and climate change to 2050: scenarios, results, policy, Tech. rep., International Food Policy Research Institute, Washington, D.C., 2010. 3596
- Neumann, K., Stehfest, E., Verburg, P. H., Siebert, S., Müller, C., and Veldkamp, T.: Exploring global irrigation patterns: a multilevel modelling approach, *Agr. Syst.*, 104, 703–713, doi:10.1016/j.agsy.2011.08.004, 2011. 3595
- 25 Perry, C., Steduto, P., Allen, R. G., and Burt, C. M.: Increasing productivity in irrigated agriculture: agronomic constraints and hydrological realities, *Agr. Water Manage.*, 96, 1517–1524, doi:10.1016/j.agwat.2009.05.005, 2009. 3596, 3598, 3610, 3615
- Perry, C. J. and Hellegers, P. J. G. J.: To what extent do improved irrigation technologies extend aquifer life?, *Hydrogeol. J.*, 20, 907–913, doi:10.1007/s10040-012-0872-0, 2012. 3596, 3615
- 30 Pfeiffer, L. and Lin, C.: Incentive-based groundwater conservation programs: perverse consequences?, *Agricultural and Resource Economics*, 12, 12 pp., available at: [http://](http://giannini.ucop.edu/media/are-update/files/issues/v12n6.pdf)

3623

- giannini.ucop.edu/media/are-update/files/issues/v12n6.pdf (last access: 11 February 2015), 2009. 3596
- Pfeiffer, L. and Lin, C. Y. C.: Does efficient irrigation technology lead to reduced groundwater extraction? Empirical evidence, *J. Environ. Econ. Manag.*, 67, 189–208, doi:10.1016/j.jeem.2013.12.002, 2014. 3596, 3615
- 5 Plusquellec, H.: Is the daunting challenge of irrigation achievable?, *Irrig. Drain.*, 51, 185–198, doi:10.1002/ird.51, 2002. 3595
- Porkka, M., Gerten, D., Schaphoff, S., Siebert, S., and Kummu, M.: Causes and trends of global historical green-blue water scarcity in food production, in preparation, 2015. 3606
- 10 Portmann, F. T., Siebert, S., and Döll, P.: MIRCA2000 – Global monthly irrigated and rainfed crop areas around the year 2000: a new high-resolution data set for agricultural and hydrological modeling, *Global Biogeochem. Cy.*, 24, GB1011, doi:10.1029/2008GB003435, 2010. 3595, 3606
- Postel, S., Iwra, M., Water, G., Project, P., and Keller, J.: Drip irrigation for small farmers a new initiative to alleviate hunger and poverty, *Water Int.*, 26, 3–13, doi:10.1080/02508060108686882, 2001. 3616
- 15 Rogers, D., Lamm, F., Alam, M., Trooiën, T., Barnes, G. C. P., and Mankin, K.: *Efficiencies and Water Losses of Irrigation Systems*, Irrigation management systems, Kansas State University, 1997. 3604, 3605
- 20 Rohwer, J., Gerten, D., and Lucht, W.: Development of functional irrigation types for improved global crop modelling – PIK report No. 104, Tech. Rep. 104, Potsdam Institute for Climate Impact Research, Potsdam, Germany, 2007. 3597, 3611
- Rosegrant, M. W., Cai, X., and Cline, S. A.: *World water and food to 2025: dealing with scarcity*, Tech. rep., International Food Policy Research Institute, Washington, D.C., 2002. 3611
- 25 Rost, S., Gerten, D., Bondeau, A., Lucht, W., Rohwer, J., and Schaphoff, S.: Agricultural green and blue water consumption and its influence on the global water system, *Water Resour. Res.*, 44, 1–17, doi:10.1029/2007WR006331, 2008. 3597, 3600, 3602, 3613
- Rost, S., Gerten, D., Hoff, H., Lucht, W., Falkenmark, M., and Rockström, J.: Global potential to increase crop production through water management in rainfed agriculture, *Environ. Res. Lett.*, 4, 044002, doi:10.1088/1748-9326/4/4/044002, 2009. 3597
- 30 Rudolf, B., Becker, A., Chneider, U., Meyer-Christoffer, A., and Ziese, M.: "GPCC Full Data Reanalysis Version 5" providing high-quality gridded monthly precipitation data for the global land-surface is public available since December, Tech. Rep. December, GPCC Status

3624

- Report, available at: http://www.dwd.de/bvbw/generator/DWDWWW/Content/Oeffentlichkeit/KU/KU4/KU42/en/Reports_Publications/GPCC_status_report_2010,templateId=raw,property=publicationFile.pdf/GPCC_status_report_2010.pdf (last access: 14 January 2013), 2010. 3606
- 5 Sauer, T., Havlík, P., Schneider, U. A., Schmid, E., Kindermann, G., and Obersteiner, M.: Agriculture and resource availability in a changing world: The role of irrigation, *Water Resour. Res.*, 46, W06503, doi:10.1029/2009WR007729, 2010. 3597, 3606, 3611, 3612, 3629
- Schaphoff, S., Heyder, U., Ostberg, S., Gerten, D., Heinke, J., and Lucht, W.: Contribution of permafrost soils to the global carbon budget, *Environ. Res. Lett.*, 8, 014026, doi:10.1088/1748-9326/8/1/014026, 2013. 3601
- 10 Schmitz, C., Lotze-Campen, H., Gerten, D., Dietrich, J. P., Bodirsky, B., Biewald, A., and Popp, A.: Blue water scarcity and the economic impacts of future agricultural trade and demand, *Water Resour. Res.*, 49, 3601–3617, doi:10.1002/wrcr.20188, 2013. 3597, 3612
- Seckler, D.: The new era of water resources management: from “dry” to “wet” water savings, Tech. rep., International Irrigation Management Institute (IIMI), Colombo, Sri Lanka, 1996. 3596, 3615
- 15 Seckler, D., Molden, D., and Sakthivadivel, R.: The concept of efficiency in water – resources management and policy, in: *Water Productivity in Agriculture: Limits and Opportunities for Improvement*, chap. 3, edited by: Kijne, J., Barker, R., and Molden, D., International Water Management Institute, Colombo, Sri Lanka, 37–51, doi:10.2136/vzj2007.0085br, 2003. 3598, 3600
- 20 Shah, T.: Groundwater governance and irrigated agriculture, TEC background papers no. 19, Tech. Rep. 19, Global Water Partnership Technical Committee, Stockholm, Sweden, 2014. 3615
- 25 Siebert, S. and Döll, P.: Quantifying blue and green virtual water contents in global crop production as well as potential production losses without irrigation, *J. Hydrol.*, 384, 198–217, doi:10.1016/j.jhydrol.2009.07.031, 2010. 3595, 3597, 3610
- Siebert, S., Kummu, M., Porkka, M., Döll, P., Ramankutty, N., and Scanlon, B. R.: A global data set of the extent of irrigated land from 1900 to 2005, *Hydrol. Earth Syst. Sci.*, 19, 1521–1545, doi:10.5194/hess-19-1521-2015, 2015. 3595, 3606, 3635
- 30 Simons, G. G., Bastiaanssen, W. W., and Immerzeel, W. W.: Water reuse in river basins with multiple users: a literature review, *J. Hydrol.*, 522, 558–571, doi:10.1016/j.jhydrol.2015.01.016, 2015. 3596

3625

- Sitch, S., Smith, B., Prentice, I. C., Arneeth, A., Bondeau, A., Cramer, W., Kaplan, J. O., Levis, S., Lucht, W., Sykes, M. T., Thonicke, K., and Venevsky, S.: Evaluation of ecosystem dynamics, plant geography and terrestrial carbon cycling in the LPJ dynamic global vegetation model, *Glob. Change Biol.*, 9, 161–185, doi:10.1046/j.1365-2486.2003.00569.x, 2003. 3601
- 5 Stacked, T. and Hagemann, S.: Development and evaluation of a global dynamical wetlands extent scheme, *Hydrol. Earth Syst. Sci.*, 16, 2915–2933, doi:10.5194/hess-16-2915-2012, 2012. 3597
- Steffen, W., Richardson, K., Rockström, J., Cornell, S., Fetzer, I., Bennett, E., Biggs, R., Carpenter, S. R., de Wit, C. A., Folke, C., Mace, G., Persson, L. M., Veerabhadran, R., 10 Reyers, B., and Sörlin, S.: Planetary boundaries: guiding human development on a changing planet, 347, 6223, doi:10.1126/science.1259855, 2015. 3595
- Tilman, D., Balzer, C., Hill, J., and Befort, B. L.: Global food demand and the sustainable intensification of agriculture, *P. Natl. Acad. Sci. USA*, 108, 20260–20264, doi:10.1073/pnas.1116437108, 2011. 3595
- 15 Valin, H., Sands, R. D., van der Mensbrugghe, D., Nelson, G. C., Ahammad, H., Blanc, E., Bodirsky, B., Fujimori, S., Hasegawa, T., Havlik, P., Heyhoe, E., Kyle, P., Mason-D'Croz, D., Paltsev, S., Rolinski, S., Tabeau, A., van Meijl, H., von Lampe, M., and Willenbockel, D.: The future of food demand: understanding differences in global economic models, *Agr. Econ.*, 45, 51–67, doi:10.1111/agec.12089, 2014. 3595
- 20 van Halsema, G. E. and Vincent, L.: Efficiency and productivity terms for water management: a matter of contextual relativism versus general absolutism, *Agr. Water Manage.*, 108, 9–15, doi:10.1016/j.agwat.2011.05.016, 2012. 3603
- Wada, Y. and Bierkens, M. F. P.: Sustainability of global water use: past reconstruction and future projections, *Environ. Res. Lett.*, 9, 104003, doi:10.1088/1748-9326/9/10/104003, 25 2014. 3610
- Wada, Y., van Beek, L. P. H., and Bierkens, M. F. P.: Modelling global water stress of the recent past: on the relative importance of trends in water demand and climate variability, *Hydrol. Earth Syst. Sci.*, 15, 3785–3808, doi:10.5194/hess-15-3785-2011, 2011a. 3597
- 30 Wada, Y., van Beek, L. P. H., Viviroli, D., Dürr, H. H., Weingartner, R., and Bierkens, M. F. P.: Global monthly water stress: 2. Water demand and severity of water stress, *Water Resour. Res.*, 47, W07518, doi:10.1029/2010WR009792, 2011b. 3610

3626

Wada, Y., van Beek, L. P. H., and Bierkens, M. F. P.: Nonsustainable groundwater sustaining irrigation: a global assessment, *Water Resour. Res.*, 48, W00L06, doi:10.1029/2011WR010562, 2012. 3610

Wada, Y., Wisser, D., Eisner, S., Flörke, M., Gerten, D., Haddeland, I., Hanasaki, N., Masaki, Y., Portmann, F. T., Stacke, T., Tessler, Z., and Schewe, J.: Multimodel projections and uncertainties of irrigation water demand under climate change, *Geophys. Res. Lett.*, 40, 4626–4632, doi:10.1002/grl.50686, 2013. 3597

Wada, Y., Wisser, D., and Bierkens, M. F. P.: Global modeling of withdrawal, allocation and consumptive use of surface water and groundwater resources, *Earth Syst. Dynam.*, 5, 15–40, doi:10.5194/esd-5-15-2014, 2014. 3597, 3611

Waha, K., van Bussel, L. G. J., Müller, C., and Bondeau, A.: Climate-driven simulation of global crop sowing dates, *Global Ecol. Biogeogr.*, 21, 247–259, doi:10.1111/j.1466-8238.2011.00678.x, 2012. 3601

Ward, F. A. and Pulido-Velazquez, M.: Water conservation in irrigation can increase water use, *P. Natl. Acad. Sci. USA*, 105, 18215–18220, doi:10.1073/pnas.0805554105, 2008. 3596, 3615

World Bank: World Development Report 2010 – Development and Climate Change, Tech. rep., World Bank, Washington, D.C., 2010. 3616

Wriedt, G., Van der Velde, M., Aloe, A., and Bouraoui, F.: Estimating irrigation water requirements in Europe, *J. Hydrol.*, 373, 527–544, doi:10.1016/j.jhydrol.2009.05.018, 2009. 3597

Zwart, S. J. and Bastiaanssen, W. G. M.: Review of measured crop water productivity values for irrigated wheat, rice, cotton and maize, *Agr. Water Manage.*, 69, 115–133, doi:10.1016/j.agwat.2004.04.007, 2004. 3611

Table 1. Parameterization of irrigation systems in LPJmL. Sensitivity analyses for parameter estimates are available in the Supplement (Figs. S1 and S2).

Irrigation system	Distribution uniformity scalar	Conveyance efficiency ¹	Soil evaporation	Interception	Runoff	Irrigation threshold ²	Minimal irrig. amount
Surface	1.15	open canal: sand 0.7, loam 0.75, clay 0.8	unrestricted	no	surface, lateral, percolation	C4: 0.7 C3 (prec < 900): 0.8	1 mm
Sprinkler	0.55	pipe: 0.95		yes	lateral, percolation	C3 (prec ≥ 900): 0.9 Rice: 1.0	
Drip	0.05		soil evap. of irr. water reduced by 60%	no	none, only indirect precip. leaching		none

¹ Open canal conveyance efficiency depends on soil hydraulic conductivity (K_s): $K_s > 20$: sand, $10 \leq K_s \leq 20$: loam, $K_s < 10$: clay; 50% of conveyance losses are assumed to evaporate, for loam and clay (higher K_s) and open canal conveyance the fraction is 60 and 75%, resp. ² Depending on crop type.

Table 2. Biophysical and technical irrigation system suitability by crop type (CFT), based on Sauer et al. (2010) and Fischer et al. (2012).

Crop type (CFT)	Surface	Sprinkler	Drip
Temperate cereals (wheat, rye, barley)	x	x	–
Rice	x	–	–
Maize	x	x	–
Tropical cereals (millet, sorghum)	x	x	–
Pulses (field peas)	x	x	x
Temperate roots (sugar beet)	x	x	–
Tropical roots (cassava)	–	–	–
Sunflower	x	x	x
Soybean	x	x	x
Groundnut	x	x	–
Rapeseed	x	x	–
Sugarcane	x	x	–
Others (e.g. cotton, vine, coffee, citrus)	x	x	x
Pastures	x	x	–

3629

Table 3. Global annual sums (km^3) of irrigation water withdrawal (W_d), return flow (W_r), irrigation water consumption (W_c) further split into beneficial (W_{bc}) and non-beneficial consumption (W_{nbc}), and E_b (in %), given as 2004–2009 averages. Values are for actual conditions and the All-Surface, All-Sprinkler and All-Drip scenarios.

	Actual	All-Surface	All-Sprinkler	All-Drip
Withdrawal, W_d	2396	2701	1502	907
Return flow, W_r	1184	1409	517	128
Consumption, W_c	1212	1292	985	779
Beneficial consumption, W_{bc}	701	707	702	653
Non-beneficial consumption, W_{nbc}	511	585	283	126
Beneficial efficiency, E_b	34	30	52	73

3630

Table 4. Mean basin-level changes in non-beneficial consumption (W_{nbc}) and crop water productivity (CWP) through system transitions from surface to sprinkler and drip, respectively; area-weighted means over all simulated basins in %.

	Surface to Sprinkler	Surface to Drip
Change in W_{nbc}	-54 (±8)	-76 (±7)
Change in CWP	9 (±6)	15 (±9)

Table 5. Comparison of field application efficiencies (for reasons of comparison, we employ here the traditional definition: consumed per applied irrigation water) for major world regions compared with literature values in %. This study's results are area-weighted averages, based on current distribution of irrigation systems (Fig. 3).

World region	Surf	Sprink	Drip	Surf	Sprink	Drip	Surf	Sprink	Drip
	(this study)			(Rohwer et al., 2007)			(Sauer et al., 2010)		
North America	52	76	87	49	68	90	50	85	93
South America	55	79	87	51	68	90	38	75	88
Europe and Russia	50	80	90	52	72	90	52	86	93
Mena	61	85	94	49	69	90	22	60	80
SSA	54	73	87	54	75	90	28	64	82
Central and East Asia	55	78	83	48	68	90	42	79	89
South Asia	47	80	91	48	68	90	32	68	84
SE Asia and Oceania	52	66	86	48	70	90	38	75	88
World	52	78	88	49	69	90	42	78	89

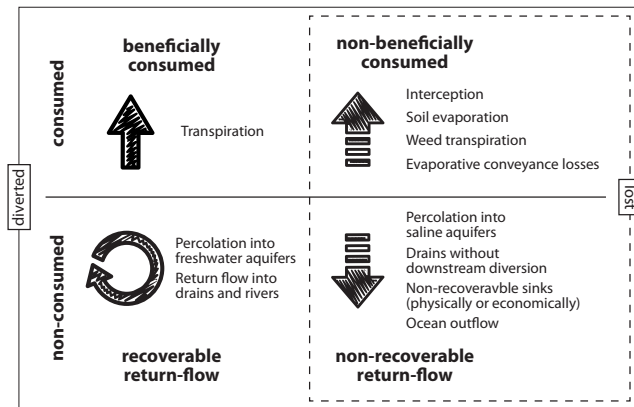


Figure 1. Pathways of irrigation water fluxes. All diverted water is either consumed (non-)beneficially, or re-enters rivers, reservoirs and aquifers, which makes it recoverable through return flow. Non-beneficial consumption and non-recoverable return flow can be considered losses (at the basin scale).

3633

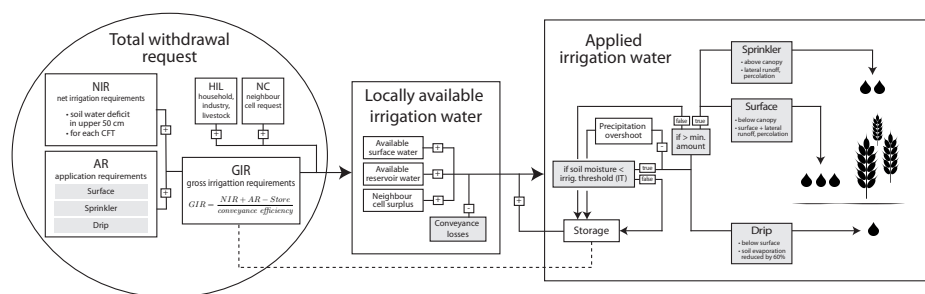


Figure 2. Irrigation water flows in LPJmL from plant-specific net irrigation requirement to actual field application. Variables represented in grey-shaded boxes depend on system-specific parameters that are presented in Table 1.

3634

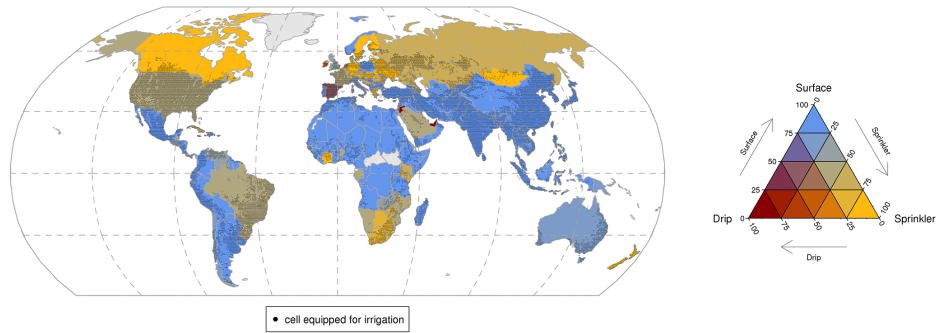


Figure 3. Global distribution of irrigation systems at country level, based on AQUASTAT statistics. Cells that include irrigated areas are hatched, based on Siebert et al. (2015).

3635

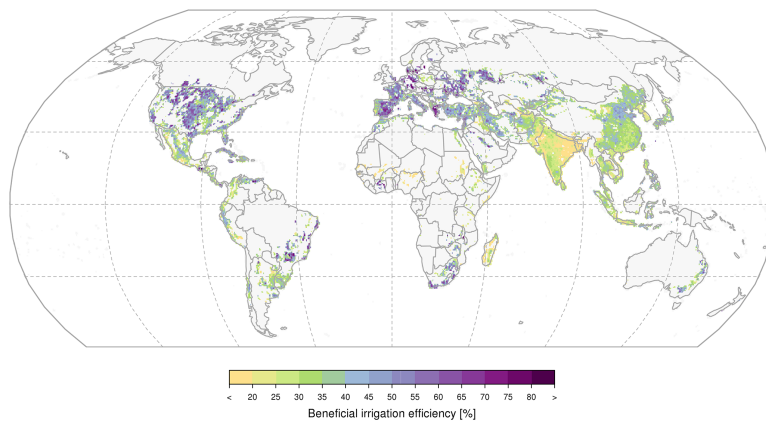
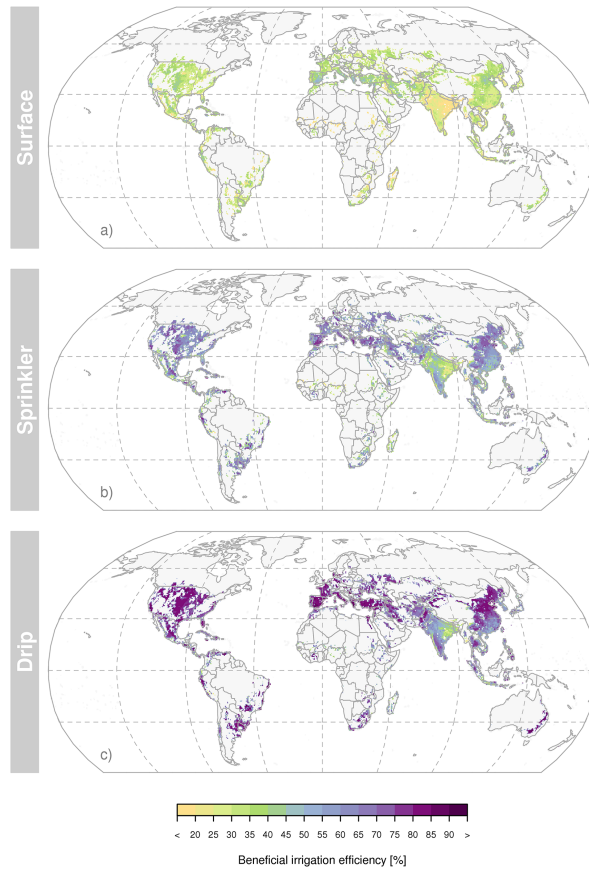


Figure 4. Global patterns of beneficial irrigation efficiency (E_b , ratio of transpired and diverted water) as area-weighted mean over CFTs (exclusive “others” and pastures) and based on the system distribution in Fig. 3.

3636



3637

Figure 5. Global patterns of beneficial irrigation efficiency (E_b , ratio of transpired and diverted water) for each irrigation system (a) surface, (b) sprinkler, (c) drip, calculated as area-weighted mean over CFTs (excl. “others” and pastures). This figure is based on theoretical scenarios, in which each system is respectively assumed to be applied on the entire irrigated area.

3638

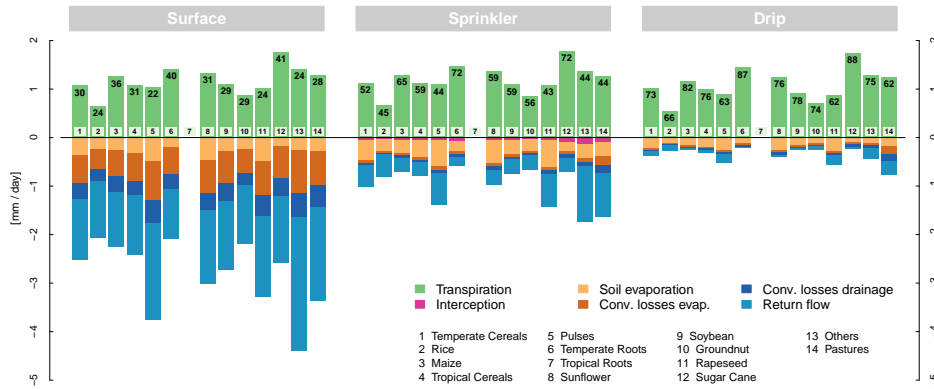
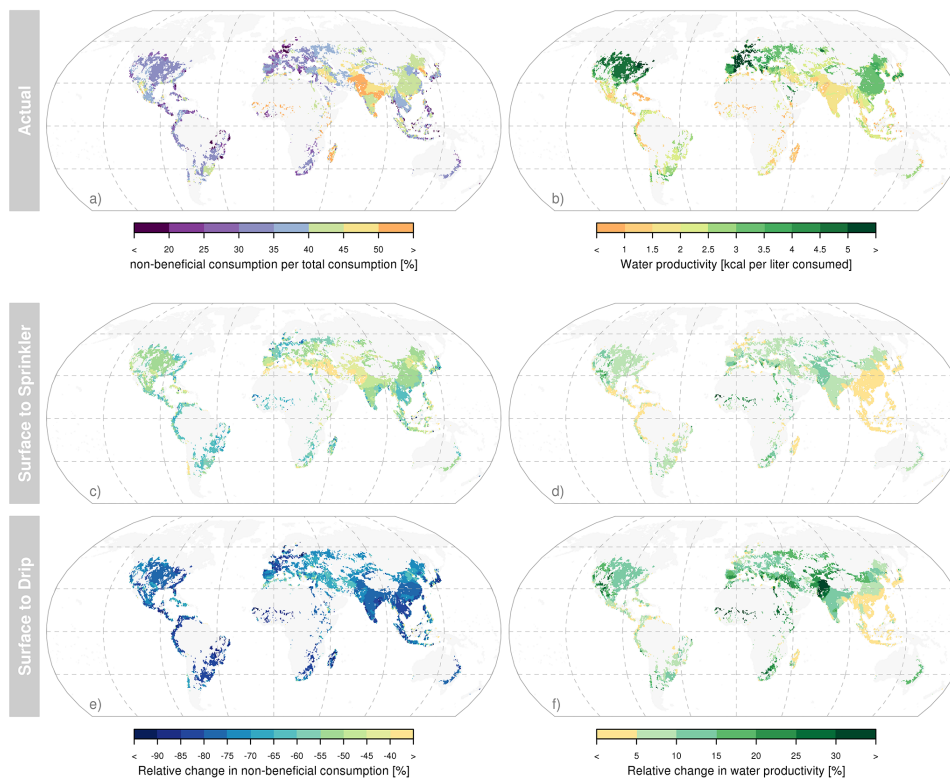


Figure 6. Decomposition of beneficial and non-beneficial irrigation water fluxes for each simulated CFT and irrigation system, in mm d^{-1} averaged over the respective growing seasons and cultivated areas. For better comparability, each system is individually applied on all irrigated areas assuming the same, optimal management. The number at the top of each stack represent the CFT-specific beneficial irrigation efficiency (E_b , in %). Tropical roots are not irrigated.

3639



3640

Figure 7. Basin-level aggregation of ratio of non-beneficial consumption and total consumption (RNC, **a**), and water productivity (kcal from irrigated crops per consumed liter of blue and green water, **b**) given the current distribution of irrigation systems. Panels (**c–f**) show the relative change in E_b and water productivity given a transition from surface to sprinkler (**c, d**) and surface to drip systems (**e, f**), respectively (All-surface, All-sprinkler, and All-drip scenarios). Pastures and “others” are excluded.

3641

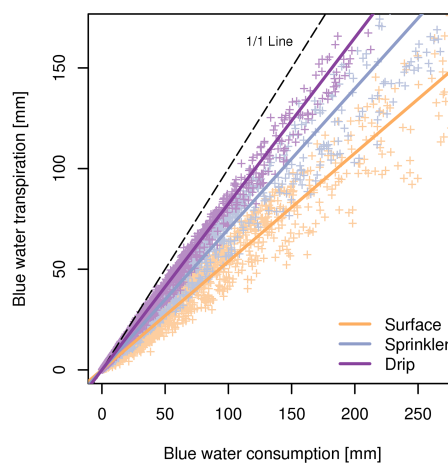
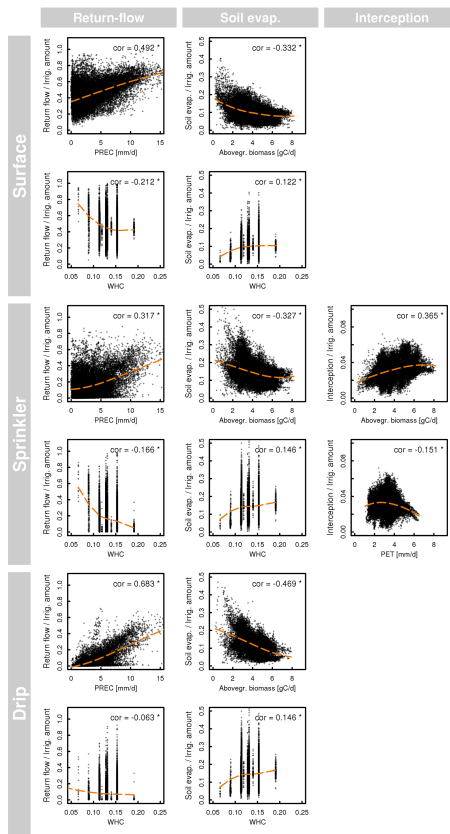


Figure 8. Relation of blue water consumption and blue water transpiration for the three scenarios All-Surface, All-Sprinkler, All-Drip and each grid cell, compared to the 1/1-Line.

3642



3643

Figure 9. Dependencies of non-beneficial irrigation water fluxes on its main biophysical driving factors (3 columns: return flow, soil evaporation, interception). Double rows represent the irrigation system: surface, sprinkler, and drip. Data is based on 12 crop CFTs from the All-Surface, All-Sprinkler and All-Drip scenario, respectively and country-scale management intensities are harmonized (calibration factors are set so as to represent systems with optimal management). Dashed lines indicate polynomial bias curve, “cor” refers to Spearman’s correlation coefficient (*, if p value $< 10^{-9}$). PREC: precipitation, WHC: water holding capacity, PET: potential evapotranspiration.

3644