

This discussion paper is/has been under review for the journal Hydrology and Earth System Sciences (HESS). Please refer to the corresponding final paper in HESS if available.

## Hydrochemistry (major and trace elements) of Lake Malawi (Nyasa), Tanzanian Northern Basin: local versus global considerations

P. Branchu<sup>1</sup>, L. Bergonzini<sup>2</sup>, J.-P. Ambrosi<sup>3</sup>, D. Cardinal<sup>4</sup>, M. Delalande<sup>2,\*</sup>,  
E. Pons-Branchu<sup>5</sup>, and M. Benedetti<sup>6</sup>

<sup>1</sup>Laboratoire Régional de l'Ouest Parisien, 12 rue Teisserenc de Bort, 78190 Trappes, France

<sup>2</sup>UMR-CNRS 8148 IDES, Bât. 504, Université Paris-Sud, 91405 Orsay Cedex, France

<sup>3</sup>CEREGE – UMR 6635 – Europôle Méditerranéen de l'Arbois, BP 80, 13545 Aix En Provence cedex 04, France

<sup>4</sup>Royal Museum for Central Africa, Dept. of Geology and Mineralogy, 3080 Tervuren, Belgium

<sup>5</sup>LSCE – UMR 1572, Orme des Merisiers Bât. 701, Centre CEA de Saclay, 91191 Gif sur Yvette Cédex, France

<sup>6</sup>UMR 7154 – IGP, Université Paris 7, Case postale 7052, 75205 Paris Cedex 13, France

4371

\*present address: UMR7517 Laboratoire d'Hydrologie et de Géochimie de Strasbourg, 1 rue Blessig – 67084 Strasbourg Cédex, France

Received: 8 June 2010 – Accepted: 14 June 2010 – Published: 7 July 2010

Correspondence to: P. Branchu (philippe.branchu@developpement-durable.gouv.fr)

## Abstract

This paper presents the first inventory of dissolved minor and trace element (F, Al, Fe, Mn, Ba, Cd, Cr, Cu, Pb, Mo, Bi, Sr, Zn) concentrations in Lake Malawi, the second largest African lake. Sampling was carried out during 1993 dry season in the northern part of the lake. Trace metal concentrations were measured, together with Ca, Mg, Na, K, Cl, SO<sub>4</sub>, Alkalinity and Si, along three profiles in the lake northern extremity, in five tributaries and two on-land hydrothermal springs. Water profiles show similar elemental distributions and concentrations that are influenced by lake physical-chemical stratification. Stratification, assessed using temperature, conductivity, Si and Mn profiles, is characterised by two boundaries: the thermocline (70–90 m) and the oxicleine (150–190 m). Elemental water concentrations are discussed using simple covariance analyse. Epilimnetic concentrations and distribution are also influenced by atmospheric deposition and river diving. Comparison of dissolved concentrations for potentially polluting elements with World Health Organisation Guidelines and those reported for other East African lakes shows that this reservoir is uncontaminated despite an increasing human stress. Major element behaviour is assessed through a 3 boxes model. In this model Cl and K are conservative elements whereas Si is removed from the solution by diatom productivity and sedimentation. Ca, Na, Mg and alkalinity show low reactivity. Evaporation is one of the controlling factors of lake element concentration that superimposes on the watershed control. Hydrothermal activity, not evidenced in the lake, controls the chemistry of one of the main northern tributary. Chemical comparison between Northern rivers and other tributaries characterises the geographical and geological specificity of studied northern watershed. Moreover the lake annual chemical budget shows that northern watershed generates the main elemental input to the lake, illustrating the dual importance of this area in terms of water and ionic recharge to the lake.

4373

## 1 Introduction

Tropical lakes are of fundamental importance for regional economies and biodiversity conservation, but they experience large limnological changes that greatly affect their productivity, ecology, physico-chemistry and their water level at the time scale of human life. The mechanisms behind these fluctuations are not fully understood. For example, Tanganyika's falling productivity over the past century has been recently linked to increased water temperature and then higher stratification (Verburg et al., 2003; O'Reilly et al., 2003). The unprecedented rates of sedimentation increase since the early 1960's in the Lake Tanganyika basin suggests strong disturbances, which involves a combination of climatic and anthropogenic causes (e.g. heavy rainfall and deforestation; Cohen et al., 2005). Lake Victoria eutrophication (Machiwa, 2003) and metals-metalloids contamination of its waters and sediments (Ikingura et al., 2006; Kishe and Machiwa, 2003; Ramlal et al., 2003) have been linked to human threats expressed through fishing pressure, land use changes, urbanisation, industry, mining and new species introduction. Indeed, in the East African Great Lakes region, the high annual growth of population (about 2.5% according to the Population Reference Bureau, 2009) is responsible for large watershed pressure and for water stress that can lead to contamination and/or overexploitation of both water and fish resources (Cohen et al., 1996). Consequences of such human activities could be drastic, as these reservoirs constitute an important provider of freshwater and fish protein. Researches on anthropogenic disturbances in East African Great Lakes focus particularly on the possible eutrophication that is a regional scale problem (UNEP/IETC, 2000) and on sedimentary inputs to lakes (Hecky et al., 2003; Machiwa, 2003). On Lake Malawi, studies were focused on organic-pollutants in water and sediments, trace elements in sediments and mercury food web contamination (Karlson et al., 2000; Kidd et al., 1999, 2003). According to these characterisations and other reports on the pollution of East African Great Lakes (Cohen et al., 1996), Lake Malawi appears to be relatively preserved besides a water warming during last century (Branchu et al., 2005a; Vollmer

4374

et al., 2005) and increase of deforestation, along with runoff, since 1967 (Calder et al., 1995) changing the lake water balance; Furthermore it has been shown that potential changes in water compositions of the tributaries could induce important changes in the Lake Malawi water quality (Branchu et al., 2005b). The goals of this study are 1) to characterise the inorganic water geochemistry of northern part of Lake Malawi, 2) to determine its origin 3) to discuss the specificity of the northern watershed.

Lake Malawi (Fig. 1), 570 km long (9°30′–14°40′ S; 34° E), 700 m of maximum depth and a volume of 7790 km<sup>3</sup> (Vollmer et al., 2002), is the second largest surface water reservoir on the African continent and represents about 6% of the world surface free freshwaters. The lake presents at its south a surface outlet, the Shire River (Fig. 1). Overall, its catchment (126 500 km<sup>2</sup>) is affected by a tropical climate and is mainly located on the western coast drained by the Songwe, North and South Rukuru, Dwanga, Bua and Linthipe Rivers (Fig. 1). The eastern shore is mainly drained by the Ruhuhu River and the northern one by the Kiwira, Mbaka, Lufirio and Lumbila Rivers (Fig. 1). This northern basin is characterised by the Poroto-Rungwe and Livingstone mountains, volcanic rocks and has the highest specific water flow compared to the rest of the catchment (Bergonzini, 1998). The lake is meromictic with a permanent thermo-haline stratification (Halfman, 1993), which limits mixing and oxygen penetration at depths where biological degradation of settling organic matter is predominant, leading to anoxia between 170 and 300 m (Halfman, 1993; Vollmer et al., 2002). This hydrodynamic scheme is somewhat simple since spatio-temporal variations occur due to internal waves and upwelling (Eccles, 1974; Hamblin et al., 2003). According to classification based on nutrient budget concentration it would be considered as oligotrophic but due to its high plankton production rates it is rather considered as mesotrophic (Bootsma et al., 2003). Its water composition belongs to the “common” East African waters (Kilham and Hecky, 1973), resulting from a water-rock interaction dominance (Kilham, 1990; Gibbs, 1970), mostly controlled by the weathering of Precambrian granitic and metamorphic rocks of its watershed with little influence of the Rungwe volcanic rocks (Hecky and Bugenyi, 1992). The present study focuses on the

4375

northern part of the lake and its watershed (Fig. 1) that expresses singular features, with tectonic, seismic, volcanic and hydrothermal activities compared with the rest of the catchment and a relatively high heat flows at the lake’s bottom (Branchu et al., 2005a). It is based on major, minor and trace element (Alkalinity, Cl, F, SO<sub>4</sub>, K, Ca, Na, Mg, Si, Al, Fe, Cr, Mn, Co, Ni, Cu, Zn, Sr, Mo, Cd, Ba and Pb) analyses performed on water column and tributaries.

## 2 Material and methods

### 2.1 Sample collection and processing

During the framework of the CASIMIR (Comparative Analysis of Sedimentary Infill Mechanisms in Rifts) Belgian project, and especially during the fieldwork of October 1993, different types of waters from the north basin (Tanzanian part of Livingstone basin) were sampled on land and on-board of the *Nyanja* vessel. Three lake water profiles (P1, P2 and P3, Fig. 1), corresponding to epilimnetic (0–105 m) and metalimnetic (105–220 m) waters, were sampled using a 5 L PVC Hydro-Bios<sup>®</sup> bottle. On land, five rivers and two hydrothermal springs were also sampled (Fig. 1). 500 mL polypropylene (PP) flasks were flushed and filled with sampled water, flask cap was then sealed using Parafilm<sup>®</sup> and stored at temperature <4 °C until processing. Water samples were then processed in a closed place on a clean surface: 240 mL were filtered using a frontal filtration unit (Sartorius<sup>®</sup>, 47 mm type) through 0.45 µm cellulose nitrate membranes (Sartorius<sup>®</sup> type). Two PP flasks were filled with this filtered sample, only one (200 mL) being acidified at pH~1 (with Suprapur 65% HNO<sub>3</sub>). Non-acidified samples were devoted to anion analyses and acidified ones to cation, Si and trace element analysis. For alkalinity determination, one PP flask (60 mL) was fully filled by non-filtered water. All PP flasks and filters were previously washed using acidified (Suprapur 65% HNO<sub>3</sub>) MilliQ water and rinsed with MilliQ water. All the reagents are analytical grade. The filtration unit was rinsed before each operation with MilliQ water and then sam-

4376

ple's aliquot is flushed. All samples were stored at temperature  $<4^{\circ}\text{C}$  and sealed using Parafilm<sup>®</sup>. Non-refrigerated transport was restricted to a few days, water samples were stored at  $4^{\circ}\text{C}$  at the CEREGE (Centre Européen de Recherche et d'Enseignement en Géosciences de l'Environnement, Aix-en-Provence) prior to analysis.

## 5 2.2 Analytical methods

Dissolved concentrations of major anions (Cl, F and  $\text{SO}_4$ ) and cations (K, Ca, Na and Mg) were measured using capillary electrophoresis (CIA from Waters<sup>®</sup>). Calibrations ranged from 0.1 to 20 ppm for anions and 0.2 to 20 ppm for cations. Electrolyte was Chromate-OFM, pH 8, for anions and UV Cat2, pH 6, for cations. Alkalinity was determined by potentiometric HCl titration with calculation of equivalent volume by the Gran method. Al and Fe concentrations were measured using Graphite Furnace Atomic Absorption Spectrometry (GFAAS: Z8200 Hitachi<sup>®</sup>). Calibrations ranged from 2 to 40 ppb for Al and 1 to 40 ppb for Fe. Si was measured with Inductively Coupled Plasma Optical Emission Spectrometer (ICP-OES: JY 38 type III) in the 1–10 ppm range. All these analyses were performed at CEREGE. Concentrations of Cr (mass: 52), Mn (55), Ni (60), Cu (65), Zn (66), Sr (88), Mo (95), Cd (111), Ba (138) and Pb (208) were measured in the 0.05–20 ppb range by Inductively Coupled Plasma-Mass Spectrometry (ICP-MS) on a Fisons Instrument<sup>®</sup> Plasma Quad PQ2<sup>+</sup> at the Royal Museum for Central Africa (Tervuren, Belgium). An internal standard (In) was added to samples before analysis to correct for sensitivity drift. Analytical standard deviations and, for ICP-MS, calculated detection limits and reproducibility (in the lower part of the calibration range) are reported in Table 1. To consider potential metal contamination during sampling and field processing, Hydrobios bottle blank analysis using MilliQ water has been performed at laboratory (Table 1). However, hydrobios bottle blank trace element analyses reveal potential contamination in Zn and Pb but in a lower range than measured concentrations.

4377

CTD casts were performed in the north basin prior to sampling with a Sea-Bird SBE 25 logger. Only temperature and electrical conductivity (expressed as reference conductivity,  $K_{25}$ ) are presented, dissolved oxygen concentration was unfortunately not measured due to probe problems.

5 Thermodynamic computations discussed below were performed using MINTQA2 equilibration speciation model and data set presented in Tables 2 and 3.

## 3 Results and interpretations

Water column and on land (rivers and hydrothermal springs) data are presented in Tables 2 and 3 for major and trace elements, respectively. Lake Malawi major ions and general physical-chemical features are presented with reference to previous limnological characterisations. To our knowledge this work provides the first minor and trace elements data set relative to Lake Malawi whereas previous contaminants studies were mainly focussed on organic pollutants in water and on metals in fish and sediments (Karlson et al., 2000; Kidd et al., 1999, 2003).

### 15 3.1 Lake water column data

Temperature decreases from surface ( $25.4^{\circ}\text{C}$ ) to 240 m ( $22.8^{\circ}\text{C}$ ) with a main gradient between 70 and 90 m (Fig. 2a), whereas conductivity increases from  $256.7\ \mu\text{S cm}^{-1}$  at the surface to  $263.5\ \mu\text{S cm}^{-1}$  at 240 m with three main gradients at about 50–60 m, 70–90 m and 190–210 m (Fig. 2b). Cl, Ca, Na, K, Mg and alkalinity concentrations (Table 2) are similar for the three profiles and display no significant changes with depth according to standard deviations  $\text{SO}_4$  values are highly variable without clear depth-related trend. Si concentrations exhibit the same behaviour in the three profiles and increase sharply below 70 m (Table 2, Fig. 2c). Ionic budget indicates that no significant ion is missing as the imbalance percentage is in the range of analytical standard deviation (Table 2). From these data an average weight salinity of  $0.203\pm 0.003\%$  is calculated;

4378

main contributors being carbonates (72%), Na (10%) followed by Mg (6%), Ca (6%), K (3%) and Cl (2%).

Presented temperature and conductivity data match well with seasonal pattern defined by Eccles (1974) and Gonfiantini et al. (1979) (Table 4) and, except for SO<sub>4</sub>; major ion concentrations are comparable for the same depth range with the ones reported previously (Tables 4 and 5). Decrease in chloride concentrations between 1976 (Gonfiantini et al., 1979), 1980–81 (Hecky, unpublished) are discussed elsewhere (Branchu et al., 2010). Surface temperature is colder at the end of the dry season (September–October) than at its beginning (June) and warmer during the raining one (January). Metalimnetic waters express also seasonality but mixing processes play an important role, mainly at the end of the dry season. The present salinity value for surface waters computed from major ion concentration (0–25 m) 0.203‰ matches well the 0.208‰, computed from Gonfiantini et al. data (1979). Similarity between 1976 and 1993 ionic characterisations can illustrate a relative steady state for major elements. Other published data (e.g., Talling and Talling, 1965) are not included in our comparison as they concern mainly surface waters and do not allow ionic balance computation.

At the three stations several trace elements as Mn, Fe, Al, Ni, Pb, Cd, Ba and Sr are enriched in surface water (0–10 m; Fig. 2d–f, Table 3). Deeper, Mn concentrations (Fig. 2d) are homogeneous, and then increase below 150–190 m whereas Fe (Fig. 2e), Ni and Pb profiles are homogeneous in the first 200 m and only increase for deepest samples (197 and 240 m, for P2 and P3, respectively). Other elements as F, Cr, Cu and Mo are characterised by relatively homogeneous profiles. Data relative to minor and trace elements of surface point (10 m) in P1 station and relative to F at 5 m depth in P3 station are outliers that are not considered in average and standard deviation computations (Table 3).

### 3.2 River water and hydrothermal spring data

There is no previous published data on the chemistry of Lake Malawi tributaries except for Si (Bootsma et al., 2003).

4379

Lumbila River that drains the Livingstone fault top is much colder (19.5 °C) than other rivers ( $27 < T < 30$ ) and also than epilimnetic waters. Rivers are diluted compared to lake waters except for Kiwira River. Their chemistry (Table 2) is dominated by carbonates and by Na (Kiwira and Mbaka Rivers), Na and Ca (Lufirio and Songwe Rivers) and Na, Ca and K (Lumbila River). Dissolved concentrations are scattered (i.e. standard deviation >30%, largely above the analytical variability) for all major components, whereas dissolved Cr, Ni, Cu and Pb concentrations are similar (i.e. standard deviation <15%, Tables 2 and 3). The high K, Na, Si, Cl, SO<sub>4</sub>, F, Mo and Cd concentrations in the Kiwira River explain most of this scattering. Highest Sr concentration occurs in the Lufirio River. Cd and F concentrations are below the detection limit except for Kiwira River.

Both hydrothermal spring waters have neutral pH, temperatures of about 60 °C and homogenous major element concentrations (Tables 2 and 3) with high Na and HCO<sub>3</sub> contents. Ni and Cd concentrations are below the detection limit. In Giggenbach (1991) triangular diagrams, these waters lie in the carbonate corner and are considered immature (no chemical equilibrium). Major element chemistry matches well with previous characterisations (Harkin, 1960; Makundi and Kifua, 1985) whereas no data on trace elements were previously published.

Kiwira River singularity is associated to a hydrothermal influence (see hot springs chemistry in Tables 2 and 3). Hydrothermal springs are indeed present in its watershed with a flow that could reach about  $1 \text{ m}^3 \text{ s}^{-1}$  (James, 1959). Their contribution to the lake chemistry is significant as the Kiwira River represents about 5% of the total river contribution to the lake (Bergonzini, 1998). Thermodynamic computation predicts a Ca, Mg, Sr and Ba carbonate precipitation from the spring that accounts for their low contribution to the Kiwira River. Such prediction is confirmed by occurrence of carbonate crusts in some hydrothermal fields (Pisarskii et al., 1998; Branchu et al., 2005b). Moreover Kiwira waters are in equilibrium with dolomite according to computations. The rich Na-HCO<sub>3</sub> hot springs (Table 2) could be associated to the presence of a magma chamber at depth (Pisarskii et al., 1998; Branchu et al., 2005b).

4380



same than suspended matter (SM) Al/Fe measured in river Kiwira, Songwe, Mbaka and Lumbila (Branchu, 2001) seems to be controlled by a particulate (or colloidal) Al-Fe phase. Consistent with a  $Al/Fe \geq 1$ , the SM from tributaries are mainly clay minerals: kaolinite, illite and vermiculite types (Branchu et al., 2005a) that have high adsorption capacity (Drever, 1988). Submicron size clay minerals can be found in water samples even after filtration and are natural carrier of trace elements (Allard et al., 2002). Fe oxihydroxides should be associated as coatings with these clay minerals. The release of Fe under reducing conditions corresponds to an increase of Pb and Ni suggesting their association with Fe oxihydroxides as previously observed in aquatic systems (Benoit et al., 1994; Balistrieri et al., 1994).

Several elements show correlation but without depth related gradient. Sr and Ba are well correlated ( $r=0.92$ ) suggesting their control by a same phase. Cu, Cr and Ni covary ( $r=1$  and  $0.75$ , between Cr and Cu and Cr and Ni, respectively) and their averaged relative ratio is the same in the water column (0–200 m) and in the tributaries, suggesting a direct watershed control. Due to redox This implies for metals having affinity with Mn and mainly Fe oxihydroxides a possible scavenging by these freshly reactive surfaces (Sigg et al., 1987; Trivedi and Axe, 2001).

From this covariance analyse some phase associations are proposed but trace metal behaviour is not assessed through the present data set. In future works a particular attention should be paid to suspended matter characterization and to deeper water column sampling followed by sample processing in anoxic conditions.

### 3.6 Local processes

Local processes are superimposed over this general pattern. At P3, temperature and conductivity show indeed gradients within surface water (0–70 m): the upper layer (0–20 m) is warmer and with higher conductivity than the thermocline bound layer (Fig. 2a,b). Relative to the surface water the higher density (lower conductivity and temperature) of Lumbila River enables it to sink in the water column down to the thermocline (Branchu et al., 2005b). A similar layer was identified during 1992 rainy sea-

4383

son in the southern part of Livingstone Basin near the Ruhuhu River mouth (Halfman and Scholz, 1993). Lake surface waters (0–10 m) are also characterised by a metal enrichment (Mn, Fe, Al, Ni, Pb, Cd, Ba and Sr) at all stations. As tributaries water concentrations are lower for these elements than surface lake water one's, they cannot contribute significantly to this level except by interaction with their particulate load (clay minerals and other particles). Such enrichment can be associated, as for oceanic or other lakes, to atmospheric deposition and then to the elemental scavenging by settling particles (Stumm and Morgan, 1996). In tropical regions potential sources of such depositions are denuded soils and biomass burning from local or long-range area. In lakes Malawi and Tanganyika watersheds, biomass burning mainly occurs during the dry season and has been proposed to partly explain N, S and P rain concentrations (Bootsma et al., 1996; Langenberg et al., 2003). However soil and wind influence also Ca, Mg rain contents (Bootsma et al., 1996). In addition to this rainy influence, it is likely that biomass burning and wind over eroded soils should also influence dry depositions, which is probably responsible of the lake surface enrichment. The homogeneity between and along the three profiles indicates comparable effects of the predominant processes that occur in North Lake Malawi.

### 3.7 Water quality assessment

Finally, our data (lake and rivers) allow, for elements of health significance in drinking water (Cr, Ni, Cu, Mo, Cd, Pb, F and Mn) a water quality evaluation based on comparison with World Health Organisation guidelines (WHO, 2004) and comparison with other East African lake data (Kilham and Hecky, 1973; Bugenyi, 1982; Cohen et al., 1996; Challe, 2002; Table 6). Globally, Lake Malawi and northern river concentrations are below WHO guidelines and the ones measured in regional lakes classified as contaminated (Cohen et al., 1996). However, Cu concentrations are high, in the same range than those measured in Lakes Edward and George contaminated by copper mines (Bugenyi, 1982). Lead in Lake Malawi is the only exception with extreme values exceeding the guidelines (Table 6). Kiwira river fluoride concentration is higher

4384

than the WHO guideline resulting from the influence of hydrothermal springs in its watershed (Branchu et al., 2005a). Presented data characterise an uncontaminated system (lake and northern rivers) but enriched compared to the World Average River (Martin and Windom, 1991). In accordance with previously published data on heavy metals in aquatic food web and sediments (Kidd et al., 1999, 2003), Lake Malawi is an uncontaminated system from dissolved trace metal consideration whereas potentially polluting human activities are present in Malawi watershed. The sole anthropogenic process with visible impact evidenced from this study is the atmospheric inputs partly due to biomass burning and to soil erosion.

#### 10 **4 Lake Malawi water and chemical budgets**

Lake Malawi chemical budget was firstly published by Hecky and Bugenyi (1992). Northern tributaries that have specific features (geological, hydrological, relief, ...) have however been underestimated in this budget. Recently we published an original water budget for Lake Malawi based on monthly data (recorded over several years) of tributary and outlet flows, evaporation and precipitation over water surface and on lake-level records (Branchu et al., 2010; Table 7). This northern area, including Songwe, Kiwira, Mbaka, Lumbila and Lufirio watersheds, covers about 9% of the total catchment area and drains the Rungwe volcanoes that culminate at about 3000 m a.s.l.. The high relief, responsible of the highest precipitation rates of the whole catchment (more than 2000 mm y<sup>-1</sup> in the northern area compared to 1350 mm y<sup>-1</sup> for mean lake watershed), generates about 20% of total river inflow. In this budget, computed for steady state conditions, inputs to the lake are equally distributed between direct precipitation and river inputs whereas outputs are dominated, at 83%, by direct evaporation. Water residence time is 99 years for the whole lake and 5 years for the epilimnion illustrating the relative isolation of deep waters.

Hydrochemical budget is computed using this water budget and chemical data from Bootsma et al. (1996, 2003) for rain and our water column data set completed for depth

4385

>250 m by Gonfiantini et al. (1976). Global River inflow to the Lake is computed using present chemical data set completed with Hecky and Bugenyi (1992) river data set (additional 15% of lake global runoff and about 35% of the whole catchment) including rivers Linthipie, Bua, Dwangwa, Luweya, N. Rukuru, N. Rumphi and S. Rukuru. The 65% remaining river inflow, corresponding to about 35% of the catchment, that are not characterised from a physico-chemical consideration are globally associated to steep area. An average composition, computed from similar characterised area, has then been attributed to this remaining catchment. Chemical steady state assumption is required to compute this budget and constant chemical composition of waters are required. From Table 5, we can estimate a temporal (seasonal and interannual) variability (expressed as coefficient of variation) of water column (0–250 m) composition lower than 10% with highest variability for potassium and magnesium.

Seasonal and inter annual variations of river chemistry have also been considered as Hecky and Bugenyi data correspond to the end of the rainy season whereas the present data characterise the end of the dry season. The importance of chemical and flow variability has been demonstrated in such environments but affects differently major elements (Vandelannoote et al., 1999; Hecky et al., 2003; Langenberg et al., 2003). For major elements (Ca, Na, Mg, K, Cl) the seasonal to interannual variability was assessed for Mbaka and Kiwira rivers by comparing data from October 1993, November 2001 and March 2005 (Delalande, 2008). A mean temporal coefficient of variation of 22% is computed. For Si (in its soluble reactive phase) it has been shown that concentrations are stable throughout the year, a mean temporal coefficient of variation of 19% was computed (Bootsma et al., 2003).

For all elements the main input to the lake is from rivers (>75%). For all elements, except Si and Cl, the lake residence time (average ca. 520 years) about 5 times higher than for water, illustrates the relatively slow vertical exchanges between surface and deep waters. The long Cl residence time (ca. 1000 years) is linked to the high hypolimnetic Cl content of deep waters that was associated to record of past different climatic conditions (Gonfiantini et al., 1979). The whole lake higher residence time of alkalinity

4386





the euphotic zone in the epilimnion during diatom productivity and then from the lake by sedimentation, whereas dissolution occurs in the meta- and hypo-limnion (Bootsma et al., 2003; Pilskalns, 2004).

Major element (Si excepted) epilimnetic residence time is similar to the water one (about 4 years). Ca, Na, Mg, Cl, K and alkalinity epilimnetic waters are about 3.0 more concentrated than average input ( $R$  and CAT) which can be explained mainly by evaporation that concentrates inputs. Si is a nutrient with a high recycling rate, a short residence time and an input concentration 5.7 times more concentrated than epilimnetic one.

Computation of a trace metal annual budget is unrealistic as inputs are only partly known for the northern tributaries and therefore remain poorly constrained. Steady state computation (Eq. 2) of the CAT gives for all elements (except Mn) a concentration about 3 times higher than the epilimnetic measured one. The computation neglects the uncharacterised atmospheric input even if for some elements such fluxes may be important (see above). Mn is the only trace element showing a concentration gradient between epi- and meta-limnion. Input of dissolved Mn from the metalimnion, where sinking particulate Mn is dissolved through reduction, can explain the negative Mn concentration computed for the average tributary (Eq. 2).

## 6 Lake chemistry control: the northern area specificity

The northern area is responsible of 57% of the total Na input by runoff to the lake and at least of 48% for Cl, 35% for alkalinity and from 28 to 31% for other major elements illustrating the importance of this zone.

Northern tributary composition (Table 2) is compared to  $R$ . Specificity of the Kiwira River presented above is illustrated here with high Cl and Na contents and low Ca and Mg contents. For major elements, except Cl that is in low concentration in sampled rivers, average concentration of northern river, Kiwira River excluded, exceeds by a factor 2  $R_i$ . General accordance between major element CAT and  $R$  (Fig. 4) allow to

4389

be confident on CAT computations to assess trace element tributary input to the Lake. Trace elements, except Al and Fe that are about 10 times more concentrated, are in average 2 more concentrated in the average northern river than in CAT.

Both approaches (Eqs. 1 and 2) are consistent and allow to characterise the global river concentration that is globally lower, particularly for K, alkalinity, Al, Fe, Cu, Pb, Cr and Ni, than in the northern rivers. The most likely explanation for this enrichment factor is the peculiarity of the northern watershed (Branchu et al., 2005b). All the features (high relief, high precipitation rates) of this northern area, including a higher mineral charge of northern rivers, characterise high weathering rates. The enrichments of local rocks relative to the “average” watershed (Precambrian granitic and metamorphic rocks) is assessed by comparing their major element composition (e.g., Harkin, 1960) to the upper continental crust composition (UCC; Wedepohl, 1995) and for trace elements a basaltic composition (Drever, 1988) has been compared to the UCC. Weathering of basic rocks could explain the relatively high alkalinity: rocks of the trachyte-phonolite series accounting for the high K concentrations and the basalts for the enrichment in Cu, Cr, and Ni. The chemistry of the northern tributaries is then controlled by the high weathering rates of rocks of the Rungwe volcanic center; in addition for the Kiwira River the hydrothermal signal superimposes on this bedrock signature.

## 7 Summary and conclusions

This is the first published report on minor and trace element water chemistry in Lake Malawi and one of the rare dealing with major element chemistry. Regional geology, weathering processes, evaporation, biological processes and hydrothermal activity mainly control Lake Malawi major, minor and trace element concentrations. In this context, the Rungwe volcanic rocks are an important source of element to the lake. Whereas sub-lacustrine hydrothermal input has not been observed, the influence of on-land spring is noticeable through the Kiwira River. We found no evidence of anthropogenic contamination except some dry atmospheric deposition, probably linked

4390

to biomass burning and soil erosion, that influences the surface layer concentrations for several trace metals (Mn, Fe, Al, Ni, Zn, Pb, Cd, Ba, Sr). The water column physico-chemistry presents the usual features reported for stratified lakes: a Si and conductivity increase below the thermocline and a Mn enrichment in the suboxic-anoxic waters. Biological scheme of organic matter production-degradation and slow mixing processes dominate these features. At local scale temperature and conductivity in surface layer are also influenced by river inputs. Behaviour of trace metal is not discussed but covariance between elements could be indicative of phase association. Carbonates could indeed control Ca and Mg concentrations. Some trace elements (Zn, Pb, Ni) could be associated to Fe and Mn hydroxides whereas most of them do not show particular trend with depth. This study is a new contribution to the knowledge of this unique ecosystem and large reservoir of freshwater and food. Nevertheless the complete comprehension and modelling of such aquatic system require more data.

A detailed investigation of the water column around thermocline will permit to precise spatial extension of sinking river layer; in the same way a detailed investigation around oxicleine would allow to precise i) oxidant sequence linked to organic matter degradation, ii) nature of the “turbid layer” occurring at or just above the depth of DO disappearance.

Future work should include the effect of spatial and temporal variability on the geochemical parameters, an exhaustive characterisation of the inputs into the lake system (rivers, wet and dry depositions), a characterisation of the dissolved and particulate phases. While Lake Malawi in regard to analysed elements, is a non contaminated water body, this status is relative as it was recently shown that due to inertia of the hydrochemical system, the present-day non-contamination of lake waters does not imply a systematic non-pollution of tributaries (Bootsma and Hecky, 1993; Branchu et al., 2005a). Computations of chronic contamination response, using simple 3-boxes model, indicate that once pollution is detected, it will be persistent for a long time depending on the element reactivity. This reactivity linked to liquid-solid reactions is associated to biological and physico-chemical processes described here. A global watershed monitoring program should then be organised in the near future. Mon-

4391

itored parameters should be relevant with metallic and organic pollutants and also eutrophication.

## References

- Allard, T., Ponthieu, M., Weber, T., Filizola, N., Guyot, J.-L., and Benedetti, M. F.: Nature and properties of suspended solids in the Amazon Basin, *B. Soc. Geol. Fr.*, 173, 67–75, 2002.
- Balistrieri, L. S., Murray, J. W., and Paul, B.: The geochemical cycling of trace metals in a biogenic meromictic lake, *Geochim. Cosmochim. Ac.*, 58, 3993–4008, 1994.
- Benoit, G., Oktay-Marshall, S. D., Cantu, A., Hood, E. M., Coleman, C. H., Corapcioglu, M. O., and Santschi, P. H.: Partitioning of Cu, Pb, Ag, Zn, Fe, Al, and Mn between filter-retained particles, colloids, and solution in six Texas estuaries, *Mar. Chem.*, 45, 307–336, 1994.
- Bergonzini, L.: Bilans hydriques de lacs (Kivu, Tanganyika, Rukwa and Nyassa) du Rift Est-Africain, *Annales-sciences géologiques. Publ. no. 103. Mus. Roy. Afr. Centr., Tervuren, Belgique*, 183 pp., 1998.
- Bootsma, H. A. and Hecky, R. E.: Conservation of the African Great Lakes: a limnological perspective, *Conserv. Biol.*, 7, 644–656, 1993.
- Bootsma, H. A., Bootsma, M. J., and Hecky, R. E.: The chemical composition of precipitation and its significance to the nutrient budget of Lake Malawi, in: *The Limnology, Climatology and Palaeoclimatology of the East African Lakes*, edited by: Johnson, T. C. and Odada, E. O., Gordon and Breach Publ., Amsterdam, The Netherland, 241–250, 1996.
- Bootsma, H. A., Hecky, R. E., Johnson, T. C., Kling, H. J., and Mwita, A. J.: Inputs, outputs and internal cycling of silica in a large, tropical lake, *J. Great Lakes Res.*, 29 (sup. 2), 121–138, 2003.
- Branchu, P.: Cycle des éléments majeurs et traces dans les grands lacs de rift tropicaux (Lacs Tanganyika et Malawi), *Processus et enregistrements biogochimiques, Annales-sciences géologiques, Publ. no. 106, Mus. Roy. Afr. Centr., Tervuren, Belgique*, 374 pp., 2001.
- Branchu, P., Bergonzini, L., Benedetti, M. F., Ambrosi, J. P., and Klerkx, J.: Sensibilité à la pollution métallique de deux grands lacs africains (Tanganyika et Malawi), *Revue des Sciences de l'Eau*, 18 (Hors-série), 161–180, 2005a.
- Branchu, P., Bergonzini, L., Delvaux, De Batist, D. M., Golubev, V., Benedetti, M., and Klerkx, J.:

4392

- Tectonic, climatic and hydrothermal control on sedimentation and water chemistry of Northern Lake Malawi (Nyasa), Tanzania, *J. Afr. Earth Sci.*, 43(4), 433–446, 2005b.
- Branchu, P., Bergonzini, L., Pons-Branchu, E., Violier, E., Dittrich, M., Massault, M., and Ghaleb, B.: Intensification of Lake Malawi stratification since the end of the Little Ice Age: evidence from sediment and pore-water chemistry, *Global Planet. Change*, in press, 2010.
- 5 Bugenyi, F. W. B.: Copper pollution studies in lakes George and Edward, Uganda: the distribution of Cu, Cd and Fe in the water and sediments, *Environ. Pollut. B*, 3, 129–138, 1982.
- Calder, I. R., Hall, R. L., Bastable, H. G., et al.: The impact of land use change on water resources in Sub-Saharan Africa: a modelling study of Lake Malawi, *J. Hydrol.*, 170, 123–135, 1995.
- 10 Challe, F. M. M.: Trace metal concentrations in water, sediments and fish tissue from Lake Tanganyika, *Sci. Total Environ.*, 299, 115–121, 2002.
- Cohen, A. S., Kaufman, L., and Ogutu-Ohwayo, R.: Anthropogenic threats, impacts and conservation strategies in the African great lakes: a review, in: *The Limnology, Climatology and Palaeoclimatology of the East African Lakes*, edited by: Johnson, T. C. and Odada, E. O., Gordon and Breach Publ., 575–624, Amsterdam, 1996.
- 15 Cohen, A. S., Palacios-Fest, M., McGill, J., et al.: Paleolimnological investigations of anthropogenic environmental change in Lake Tanganyika: I. An introduction to the project, *J. Paleolimnol.*, 34, 1–18, 2005.
- 20 Davison, W.: Iron and manganese in lakes, *Earth-Sci. Rev.*, 34, 119–163, 1993.
- Delalande, M.: Hydrologie et géochimie isotopique du Lac Masoko et des lacs volcaniques de la province active du Rungwe (Sud-Ouest Tanzanie), Ph. D. thesis, Université d'Orsay-Paris XI, France, 2008.
- Drever, J. I.: *The Geochemistry of Natural Waters*, 2nd edn., Prentice-Hall, Englewood Cliffs, 25 437 pp., 1988.
- Eccles, D. H.: An outline of the physical limnology of Lake Malawi (Lake Nyassa), *Limnol. Oceanogr.*, 19, 730–742, 1974.
- Gibbs, R. J.: Mechanisms controlling world water chemistry, *Science*, 170, 1088–1090, 1970.
- Giggenbach, W. F.: Chemical techniques in geothermal exploration, in: *Applications of Geochemistry in Geothermal Reservoir Development*, edited by: D'Amore, F. (coordinator), UNITAR/UNDP publication, Rome, 1991.
- 30 Gonfiantini, R., Zuppi, G. M., Eccles, D. H., and Ferro, W.: Isotope investigation of Lake Malawi, in: *Isotopes in Lake Studies*, IAEA, Vienna, 195–207, 1979.

4393

- Halfman, J. D.: Water column characteristics from modern CTD data, Lake Malawi, Africa, *J. Great Lakes Res.*, 19, 512–520, 1993.
- Halfman, J. D. and Schloz, C. A.: Suspended sediments in Lake Malawi, Africa: a reconnaissance study, *J. Great Lakes Res.*, 19, 499–511, 1993.
- 5 Hamblin, P. F., Bootsma, H. A., and Hecky, R. E.: Modeling nutrient upwelling in Lake Malawi/Nyasa, *J. Great Lakes Res.*, 29 (sup. 2), 34–47, 2003.
- Harkin, D. A.: The Rungwe Volcanics at the northern end of Lake Nyasa, *Geological Survey of Tanganyika, Memoir*, 2, 1–172, 1960.
- Hecky, R. E. and Bugenyi, F. W. B.: Hydrology and chemistry of the African Great Lakes and water quality issues: problems and solutions, *Mitteilung Internationale Vereinigung für Theoretische und Angewandte Limnologie*, 23, 45–54, 1992.
- 10 Hecky, R. E., Bootsma, H. A., and Kingdon, M. L.: Impact of land use on sediment and nutrient yields to Lake Malawi/Nyasa (Africa), *J. Great Lakes Res.*, 29 (sup. 2), 139–158, 2003.
- Ikingura, J. R., Akagi, H., Mujumba, J., et al.: Environmental assessment of mercury dispersion, transformation and bioavailability in the Lake Victoria goldfields, Tanzania, *J. Environ. Manage.*, 81, 167–173, 2006.
- James, T. C.: Carbon dioxide-bearing hot springs in the Songwe River Valley, Mbeya district, *Records of the Geological Survey of Tanganyika*, 3, 73–77, 1959.
- 15 Karlson, H., Muir, D. C. G., Teixeira, C. F., Burniston, D. A., Strachan, W. M. J., Hecky, R. E., Mwita, J., Bootsma, H. A., Grift, N. P., Kidd, K. A. and Rosenberg, B.: Persistent chlorinated pesticides in air, water, and precipitation from the Lake Malawi area, Southern Africa, *Environ. Sci. Technol.*, 34, 4490–4495, 2000.
- Kidd, K. A., Lockhart, L., Wilkinson, P., and Muir, D. C. G.: Metals, pesticides and other persistent contaminants in water, sediments and biota from Lake Malawi/Nyasa, in: *Water Quality Report*, edited by: Bootsma, H. A. and Hecky, R. E., Lake Malawi/Nyasa Biodiversity Conservation Project, Senga Bay, Malawi, 243–286, 1999.
- 25 Kidd, K. A., Bootsma, H. A., Hesslein, R. H., Lockhart, W. L., and Hecky, R. E.: Mercury concentrations in the food web of Lake Malawi, East Africa, *J. Great Lakes Res.*, 29 (sup. 2), 258–266, 2003.
- 30 Kilham, P. and Hecky, R. E.: Fluoride. Geochemical and ecological significance in East African waters and sediments, *Limnol. Oceanogr.*, 18, 932–945, 1973.
- Kilham, P.: Mechanisms controlling the chemical composition of lakes and rivers: data from Africa, *Limnol. Oceanogr.*, 35, 80–83, 1990.

4394

- Kishe, M. A. and Machiwa, J. F.: Distribution of heavy metals in sediments of Mwanza Gulf of Lake Victoria, Tanzania, *Environ. Int.*, 28, 619–625, 2003.
- Langenberg, V. T., Nyamushahu, S., Roijackers, R., and Koelmans, A. A.: External nutrient sources for Lake Tanganyika, *J. Great Lakes Res.*, 29 (sup. 2), 169–180, 2003.
- 5 Machiwa, P. K.: Water quality management and sustainability: the experience of Lake Victoria Environmental Management Project (LVEMP)-Tanzania, *Phys. Chem. Earth*, 28, 1111–1115, 2003.
- Makundi, J. S. and Kifua, G. M.: Geothermal features of the Mbeya prospect in Tanzania, *Geoth. Res. T.*, 9, 451–454, 1985.
- 10 Martin, J. M. and Windom, H. L.: Present and future roles of ocean margins in regulating marine biogeochemical cycles of trace elements, in: *Ocean Margin Processes in Global Change*, edited by: Mantoura, R. F. C., Martin, J. M., and Wollast, R., John Wiley & Sons, Chichester, 45–67, 1991.
- O'Reilly, C. M., Alin, S., Plisner, P.-D., Cohen, A., and McKee, B. A.: Climate change decreases aquatic ecosystem productivity of Lake Tanganyika, Africa, *Nature*, 424, 766–768, 2003.
- 15 Pilskalns, C. H.: Seasonal and interannual particle export in an African Rift Valley lake: a 5-year record from Lake Malawi, Southern East Africa, *Limnol. Oceanogr.*, 49, 964–977, 2004.
- Pisarskii, B. A., Konev, A. A., Levi, K. G., et al.: Carbon dioxide-bearing alkaline hydrotherms and strontium-bearing travertines in the Songwe River Valley (Tanzania), *Russ. Geol. Geophys.*, 39, 7, 941–948, 1998.
- 20 Population Reference Bureau: World population, Datasheet of the Population Reference Bureau, <http://www.prb.org/DataFinder.aspx>, 2009.
- Ramlal, P. S., Bugenyi, F. W. B., Kling, G. W., Nriagu, J. O., Rudd, J. W. M., and Campbell, L. M.: Mercury concentrations in water, sediment, and biota from Lake Victoria, East Africa, *J. Great Lakes Res.*, 29 (sup. 2), 283–291, 2003.
- 25 Sigg, L., Sturm, M., and Kistler, D.: Vertical transport of heavy metals by settling particles in Lake Zurich, *Limnol. Oceanogr.*, 32, 112–130, 1987.
- Stumm, W. and Morgan, J. J. (Eds.): *Aquatic Chemistry. An Introduction Emphasizing Chemical Equilibria in Natural Waters*, 2nd edn., John Wiley & Sons, New York, 1022 pp., 1996.
- 30 Taillefert, M., Lienemann, C. P., Gaillard, J. F., and Perret, D.: Speciation, reactivity, and cycling of Fe and Pb in a meromictic lake, *Geochim. Cosmochim. Ac.*, 64, 169–183, 2000.
- Talling, J. F. and Talling, I. B.: The chemical composition of African Lake waters, *Internationale Revue der gesamten Hydrobiologie*, 50, 421–463, 1965.

4395

- Trivedi, P. and Axe, L.: Predicting metal sorption to hydrous Al, Fe and Mn oxides, *Environ. Sci. Technol.*, 35, 1779–1784, 2001.
- UNEP/IETC: Planning and management of lakes and reservoirs: an integrated approach to eutrophication, 12, <http://www.unep.or.jp/ietc/publications/techpublications/techpub-11/index>, last access: 30 June 2010, 2000.
- 5 Vandellanoot, A., Deelstra, H., and Ollevier, F.: The inflow of the Rusizi River to Lake Tanganyika, *Hydrobiologia*, 407, 65–73, 1999.
- Verburg, P., Hecky, R. E., and Kling, H.: Ecological consequences of a century of warming in Lake Tanganyika, *Science*, 301, 505–507, 2003.
- 10 Vollmer, M. K., Weiss, R. F., and Bootsma, H. A.: Ventilation of Lake Malawi/Nyasa, in: *The East African Great Lakes: Limnology, Paleolimnology and Biodiversity*, *Advances in Global Change Research*, edited by: Odada, E. O. and Ollago, D. O., Kluwer Publishers, 209–233, 2002.
- Vollmer, M. K., Bootsma, H. A., Hecky, R. E., et al.: Deep-water warming trend in Lake Malawi, East Africa, *Limnol. Oceanogr.*, 50(2), 727–732, 2005.
- 15 Wedepohl, K. H.: The composition of the continental crust, *Geochim. Cosmochim. Ac.*, 59, 1217–1232, 1995.
- Wehrli, B.: Redox reactions of metal ions at mineral surfaces, in: *Offprints from Aquatic Chemical Kinetics*, edited by: Stumm, W., John Wiley & Sons, New York, USA, 311–336, 1990.
- 20 WHO: Guidelines for drinking-water quality, vol. 1: recommendations, 3rd edn., World Health Organization, <http://www.who.int/watersanitationhealth/dwq/gdwq3/en>, last access: 30 June 2010, 2004.

25

4396

**Table 1.** Analytical characteristics for water analysis.

Elements	Relative standard deviation (%) <sup>1</sup>	Reproductibility (ICP-MS) % <sup>2</sup>	Detection limit (ICP-MS) <sup>3</sup>	Hydrobios Bottle Blank
mmol L <sup>-1</sup>				
Cl	1			
SO <sub>4</sub>				
K	5			
Na	1			
Ca	2			
Mg	2			
µmol L <sup>-1</sup>				
F	5			
Al	5			
Si	2			
Sr	2	1	0.0008	<DL
Ba	1	4	0.0014	<DL
nmol L <sup>-1</sup>				
Fe	2			
Cu	3	8	3.2	<DL
Zn	2	3	7.6	25.8
Cr	4	9	1	<DL
Mn	4	9	1.3	<DL
Ni	3	6	1.7	<DL
Mo	3	12	1.2	<DL
Cd	6	18	0.4	<DL
Pb	2	18	0.2	0.4

&lt;DL: concentration lower than detection limit

<sup>1</sup> Mean value computed using all analyses performed 3 times in repeatability conditions<sup>2</sup> Computed using two analyses performed in reproductibility conditions in the lower concentration range<sup>3</sup> Detection limit=3σ blank value. σ calculated with 15 blank determinations

4397

**Table 2.** Major ion concentrations (µmol L<sup>-1</sup>, except alkalinity in µeq L<sup>-1</sup>).

Sample/depth	Ca	Na	Mg	K	Cl	SO <sub>4</sub>	Alkalinity	F	Si	Ionic balance (%)
P1 station (water depth: ca. 215 m)										
10	455	922	322	151	152	5.7	n.a.	<	15.7	-
50	458	860	295	154	105	1.1	n.a.	22.2	12.8	-
100	483	902	312	162	106	<	n.a.	18.1	51.6	-
150	486	902	306	160	119	1.6	n.a.	20.0	67.6	-
190	490	948	312	190	97	<	n.a.	16.5	87.9	-
P2 station (water depth: ca. 200 m)										
0	450	861	294	151	125	4.7	2333.9	22.0	14.6	0.2
10	452	880	295	140	128	2.7	n.a.	19.9	18.9	-
20	458	885	305	152	136	11.1	2368.2	18.9	19.6	0.2
30	470	880	313	161	140	38.3	2397.8	21.4	18.9	0.2
50	451	880	294	156	95	<	n.a.	20.8	18.2	-
75	459	887	298	165	153	3.8	n.a.	20.0	19.2	-
100	446	859	292	153	55	<	n.a.	17.0	50.2	-
125	463	886	300	166	104	7.8	2461.3	17.0	58.7	0.6
150	464	888	292	161	75	<	n.a.	16.7	66.9	-
197	453	854	260	164	114	7.0	2400.7	14.3	103.2	2.1
P3 station (water depth: ca. 245 m)										
5	508	923	314	166	104	<	n.a.	<	17.8	-
10	494	910	315	167	85	<	n.a.	19.5	18.5	-
25	492	902	305	176	106	<	n.a.	19.6	18.9	-
50	484	906	304	182	79	7.0	n.a.	15.6	17.1	-
75	482	895	301	173	133	11.4	n.a.	16.5	17.4	-
100	483	916	314	171	171	6.8	n.a.	21.9	49.1	-
150	501	940	313	182	141	5.4	n.a.	22.5	78.7	-
200	499	897	317	170	142	2.9	2407.3	20.2	104.3	5.8
240	496	906	309	164	99	1.6	2402.3	21.8	133.89	6.5
Average	474	895	303	164	115	<5.3	2395.9	19.2	45.0	-
SD (%)	4.1	2.7	4.2	7.0	24.1	>146	1.6	12.5	78.8	-
Tributaries										
Songwe	317.4	504.1	206.9	146.1	<	<	1267.9	<	355.3	14.5
Kiwira	179.7	2659.8	203.7	346.6	1037.2	72.2	2294.4	79.6	4247.1	3
Mbaka	237.5	867.9	177.7	184.1	24.1	<	1751.4	<	544.7	2.9
Lumbila	221.6	209.6	99.5	56.6	<	<	815.1	<	296.2	5.4
Lufirio	490.7	683.1	232.4	108.1	<	<	2120.0	<	297.6	2.7
Average	289.4	984.9	184.0	168.3	-	-	1649.8	-	1148.2	-
SD (%)	42.5	98.2	27.8859	65.5	-	-	37.0	-	151.1	-
Hydrothermal springs										
Mapulo	950	53210	910	1750	7120	3120	50 <sup>a</sup>	50.5	1780	-
Kasimulo	1130	58230	930	1890	6270	3890	45 <sup>a</sup>	41.3	1520	-
Average	1040	55720	920	1820	6695	3505	47.5	45.9	1650	-

n.a.: Not analysed

&lt;: Below calibration limit, in this case average is computed using the first calibration point

<sup>a</sup> Values calculated from the difference of meq cations minus meq anions

\* Not considered for average and SD computations (see text)

4398



**Table 4.** Comparison with previous temperature, conductivity and dissolved silicon data.

Ref./date	Depth range	Temperature (°C)	Conductivity ( $\mu\text{S cm}^{-1}$ )	Si ( $\mu\text{mol L}^{-1}$ )	Ref
Central Basin: Jun 1976	0–80	25.61	248.5		Gonfiantini et al. (1979)
	80–200	23.07	258.2		
Central and south. Basins Jan 1992	0–80	26.15	257.6		Halfman (1993)
	80–200	23.21	(K25) 261.2		
North. Basin: Oct 1993	0–80	24.86	(K25) 256.1	17.5	This study
	80–200	23.19	259.1	71.8	
Whole lake: Sep 1996–Sep 98	0–105			20.7±3.1	Bootsma et al. (2003)
	105–220			76.7±10.0	
North. Basin: Sep 1997	0–80	24.48	(K25) 255.5		Vollmer et al. (2002)
	80–200	23.16	257.3		

4401

**Table 5.** Major element mean epilimnetic concentrations (and standard deviation in %): comparison with previous studies.

		Ca	Mg	Na	K	Cl	Alk.	Ionic balance (%)
		$\mu\text{mol L}^{-1}$					$\mu\text{eq L}^{-1}$	
Gonfiantini et al. (1979) –Jun 1976	0–250 m <sup>1</sup>	470 (3.7)	311 (1.3)	894 (1.7)	164 (3.2)	140	2379 (1.7)	0.6
Hecky (unpublished) –Nov 1980	0–250 m <sup>2</sup>	451 (3.0)	258 (27.7)	960 (3.4)	136 (7.6)	140 (6.3)		
		442 (3.0)	278 (1.9)	873 (1.8)	160 (1.6)	137 (4.2)		
This work (Oct 1993)	0–240 m	474 (4.1)	303 (4.2)	895 (2.7)	164 (7.0)	115 (24.1)	2396 (1.6)	1.8
Variability (coefficient of variation in %)		3.3	9.5	5	9.9	1.3	0.5	

<sup>1</sup> Data are available for one 640 m deep water column.<sup>2</sup> Data are available for one 600 m deep water column.

4402



**Table 6.** Comparison between ranges of concentrations ( $\mu\text{g/L}$ ) for Cr, Ni, Cu, Zn, Mo, Cd, Pb, F and Mn, i) analysed in Lake Malawi, ii) published for other East African lakes (Bugenyi, 1982; Cohen et al., 1996; Challe, 2002) and iii) from the WHO guidelines (2004).

Concentration ( $\mu\text{g/L}$ )	Malawi	Tanganyika <sup>1</sup>	Victoria <sup>2</sup>	Edward <sup>3</sup>	George <sup>3</sup>	WHO (2004)
Cr	1.5–4.1					50 <sup>P</sup>
Ni	1.3–5.1					20 <sup>P</sup>
Cu	112.8–244.5	<6	5–57.6	15–130	90–110	2000
Zn	15.7–64.0	<1	25–125			5000*
Mo	0.7–1.1					70
Cd	<0.1–0.6	<10	2–8	9–11	5–6	3
Pb	6.3–18.0	0.007–0.12	7–94	1.1	6	10
Mn	0.8–102.9	10	50–3280			400 <sup>C</sup>
F	271.7–427.5	1060				1500

<sup>1</sup> Challe (2002) except F (Kilham and Hecky, 1973)

<sup>2</sup> Compilation from Cohen et al. (1996)

<sup>3</sup> From Bugenyi (1982)

<sup>P</sup> Constituents for which there is some evidence of a hazard but the available information on health effects is limited.

\* From WHO guidelines, 2nd edn. (1998)

<sup>C</sup> Concentrations of the substance at or below the health-based guideline value may affect the appearance, taste or odour of the water.

(Grey filled cases correspond to excess values relative to WHO guidelines)

4403

**Table 7.** Annual water budget in Lake Malawi (Branchu et al., 2010.)

Volume ( $\text{km}^3$ ) <sup>a</sup>	
Lake	7790
Epilimnion	2760
Metolimnion	2310
Hypolimnion	2720
Input ( $\text{km}^3 \text{y}^{-1}$ ) <sup>b</sup>	
Rivers	40.2
Rain	38.5
Total	78.7
Output ( $\text{km}^3 \text{y}^{-1}$ ) <sup>b</sup>	
Outflow	13.5
Evaporation	65.2
Total	78.7
Vertical exchange time (y) <sup>a</sup>	
Epi-metalimnetic	4
Meta-hypolimnetic	18
Residence time (y) <sup>c</sup>	
Lake	99
Epilimnion	5

<sup>a</sup> From Vollmer et al. (2002)

<sup>b</sup> Adapted from Bergonzini (1998)

<sup>c</sup> Residence time computation assumes steady state conditions. Residence time=volume/input

4404

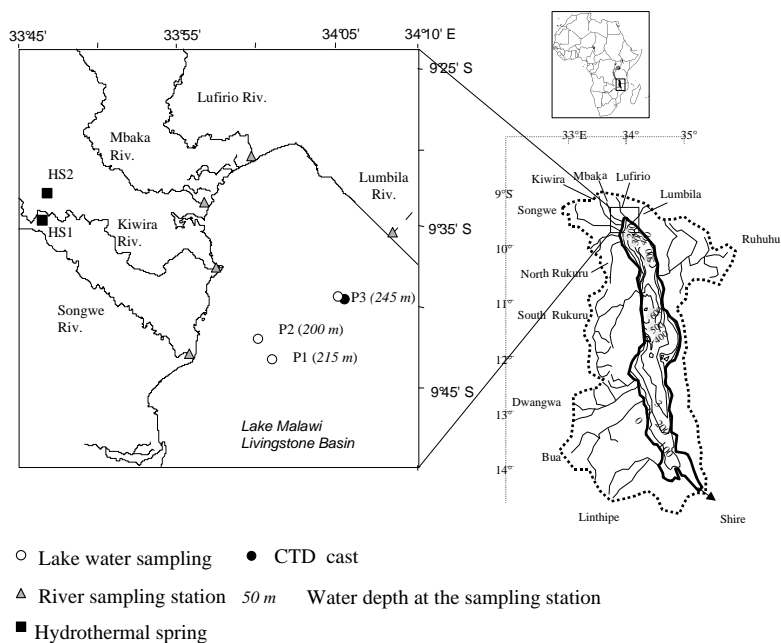
**Table 8.** Chemical budget of Lake Malawi.

	Ca	Na	Mg	Cl	Alk	K	Si
Mass (Gmol)							
Lake	3786	6893	2486	1610	18 707	1324	772
Epilimnion	1292	2456	905	386	6431	469	46
Input (Gmol y <sup>-1</sup> )	7.5	15.2	4.6	1.7	25.5	2.3	7.9
Riverine Input (%)	96	96	98	88	75	93	84
Input [ <i>R</i> ], (μmol L <sup>-1</sup> )	94.7	193.3	58.4	21.1	324.4	29.0	100.1
Output (Gmol y <sup>-1</sup> )	6.2	10.6	3.6	2.0	29.0	2.3	0.3
Residence time (y) <sup>a</sup>							
Lake	508	459	540	966	733	580	98
Epilimnion	4	4	4	3	4	4	0.7

<sup>a</sup> Residence time computation assumes steady state conditions. Residence time=mass/input

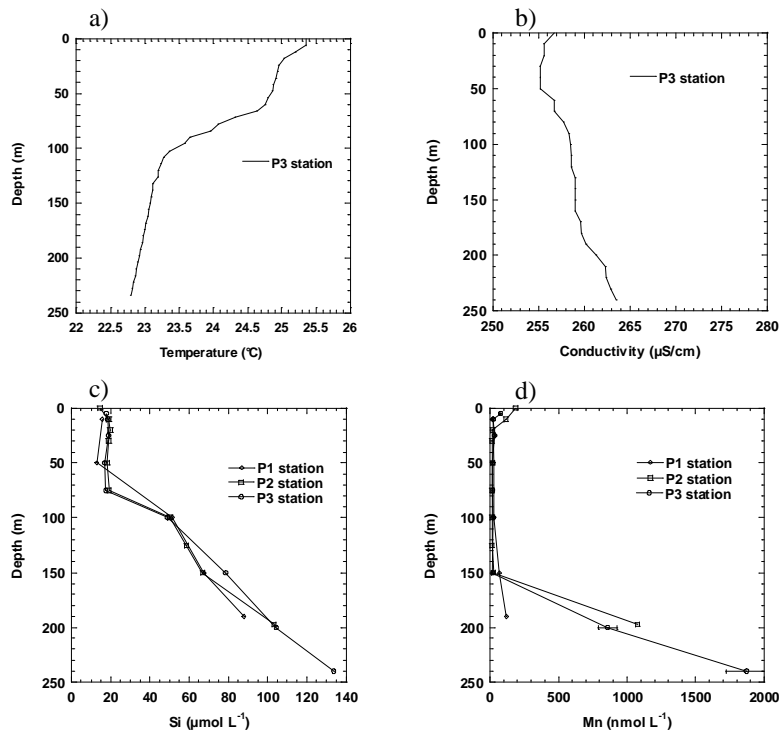
Computed from hydrological data of Table 7, and chemical data of rain (Bootsma et al., 1996, 2003), river (this study completed by Hecky and Bugenyi, 1992) and water column (this study, completed for depth >250 m by Gonfiantini et al., 1976).

4405



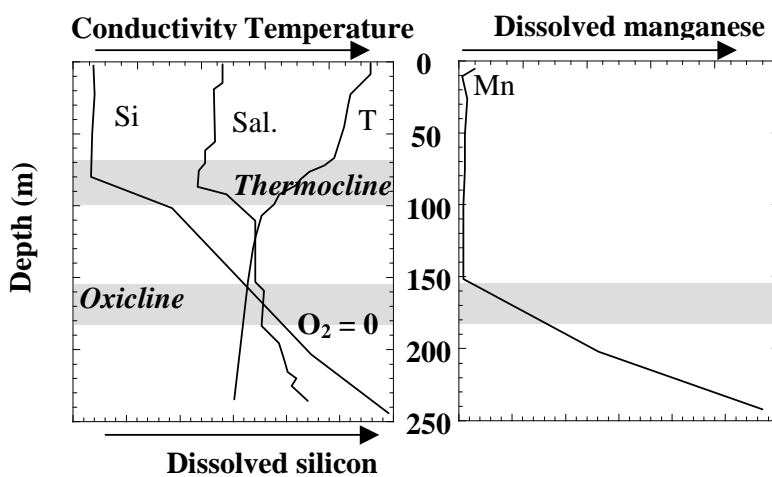
**Fig. 1.** Schematic bathymetric and hydrographic map of Lake Malawi and locations of water sampling stations in the Livingstone Basin and its catchment. Inset box shows location of Lake Malawi in Africa.

4406



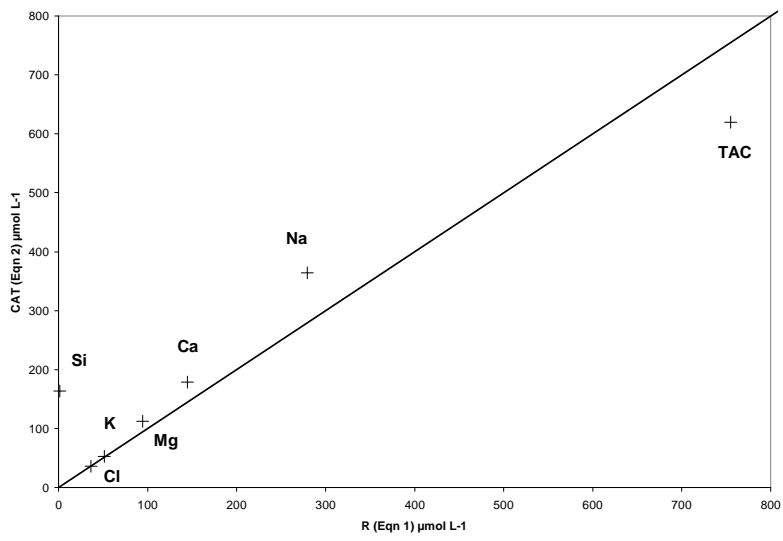
**Fig. 2.** Depth profiles of (a) temperature, (b) conductivity and dissolved (0.01  $\mu\text{m}$  filtrates) (c) Si and (d) Mn. Error bars (only reported for P3 station due to clarity considerations) correspond to  $2 \times$  Table 1 standard deviation.

4407



**Fig. 3.** Physical-chemical and hydrodynamic features of the water column Concentration/ Temperature/Conductivity scales are relative.

4408



**Fig. 4.** Major elements (Na, Ca, Mg, K, Si and alkalinity) comparison between R and CAT.