

Tables

Table S1: Number of available data points, smallest- and largest-spatial-lags, and minimum (min.), mean, maximum (max.) and coefficient of variation (CV) of annual total precipitation in hydrological wet days (PRCPTOT) in Bangladesh for each time step (year) within 1948-2007 series.

Figures

Figure S1. Spatial location of the data points (rain-gauge) where precipitation observations were available for each year and computed annual total precipitation in hydrological wet days (PRCPTOT) value (in mm).

Figure S2. Statistically significant change points in the spatial correlations of annual total precipitation in hydrological wet days (PRCPTOT) along the longitudinal (left) and latitudinal (right) gradients within the 1948-2007 series.

Table S1: Number of available data points, smallest- and largest-spatial-lags, and minimum (min.), mean, maximum (max.) and coefficient of variation (CV) of annual total precipitation in hydrological wet days (PRCPTOT) in Bangladesh for each time step (year) within 1948-2007 series.

Year	Available number of data points	Spatial lag(km)		PRCPTOT (mm)			
		Smallest	Largest	Min.	Mean	Max.	CV
1948	8	95.38	489.85	494	1532	3028	53.59
1949	9	95.22	489.85	574	1772	3369	47.4
1950	10	96.76	489.85	981	1708	3521	54.98
1951	11	68.57	489.85	225	1447	2916	53.77
1952	10	68.57	489.85	972	1778	3131	37.96
1953	12	62.08	489.85	671	1818	2813	32.95
1954	13	64.69	549.70	1006	1876	3378	36.73
1955	12	64.69	549.70	779	1744	2374	31.25
1956	14	65.64	549.70	1214	2016	2913	24.55
1957	15	61.83	549.70	651	1334	2324	33.51
1958	15	61.83	549.70	188	1263	2185	46.63
1959	15	61.83	549.70	859	1754	2888	34.38
1960	14	61.83	549.70	999	1763	2622	30.8
1961	15	61.83	549.70	878	1765	3617	51.61
1962	16	61.83	549.70	723	1447	2510	36.97
1963	15	60.14	549.70	967	1571	2839	36.03
1964	18	62.00	549.70	938	1690	3530	40.71
1965	17	61.86	549.70	1050	1860	4036	42.58
1966	21	32.57	549.70	767	1648	3694	46.48
1967	19	32.57	549.70	850	1601	3836	46.16
1968	18	32.57	484.33	1001	1892	3132	35.15
1969	19	32.57	549.70	1080	1930	3872	36.84
1970	20	32.57	549.70	952	1761	3315	34.87
1971	20	32.57	549.70	389	1662	3489	53.31
1972	19	59.25	549.70	740	1259	2856	45.51
1973	20	29.16	549.70	545	1435	2785	40.07
1974	20	32.8	478.82	849	1932	3710	43.27
1975	22	29.39	549.70	17	1353	2519	43.83
1976	21	32.57	549.70	329	1840	3371	42.07
1977	26	26.61	543.36	430	1654	3271	44.14
1978	23	28.22	543.36	84	1697	2853	39.48
1979	25	28.22	543.36	424	1615	3126	46.25
1980	25	29.04	543.36	327	1327	2758	44.84
1981	25	26.77	543.36	104	1629	3649	44.75
1982	27	28.22	543.36	732	1981	3976	47.1

1983	27	28.22	543.36	640	1822	3326	42.48
1984	27	28.22	543.36	1237	2182	4010	32.81
1985	28	28.22	539.70	701	1667	3230	39.59
1986	28	28.22	539.70	1081	1787	3133	26.13
1987	29	28.22	539.70	1124	2204	4076	36.16
1988	29	28.22	539.70	951	1959	3626	37.98
1989	30	28.22	549.70	675	1508	3958	47.28
1990	30	28.22	549.70	747	1656	3093	39.07
1991	32	28.52	538.09	1077	1960	4499	37.55
1992	32	28.52	538.09	638	1395	2849	39.57
1993	32	28.52	538.09	29	1873	3722	36.73
1994	32	28.52	538.09	696	1366	4261	53.88
1995	31	27.51	538.09	1033	1800	3528	32.17
1996	31	27.51	538.09	779	1613	3185	38.31
1997	31	27.51	538.09	962	1840	3346	32.61
1998	31	27.51	538.09	727	1948	3752	42.04
1999	32	28.52	538.09	961	2015	3661	34.14
2000	32	28.52	538.09	868	1637	3919	49.42
2001	32	28.52	538.09	818	1765	4516	51.05
2002	32	28.52	538.09	1016	1940	3186	29.74
2003	31	29.51	538.09	719	1621	4024	48.12
2004	32	28.52	538.09	1386	2117	3889	28.25
2005	32	28.52	538.09	708	1702	3605	37.84
2006	32	28.52	538.09	688	1604	3697	40.27
2007	32	28.52	538.09	1290	1993	3271	28.55

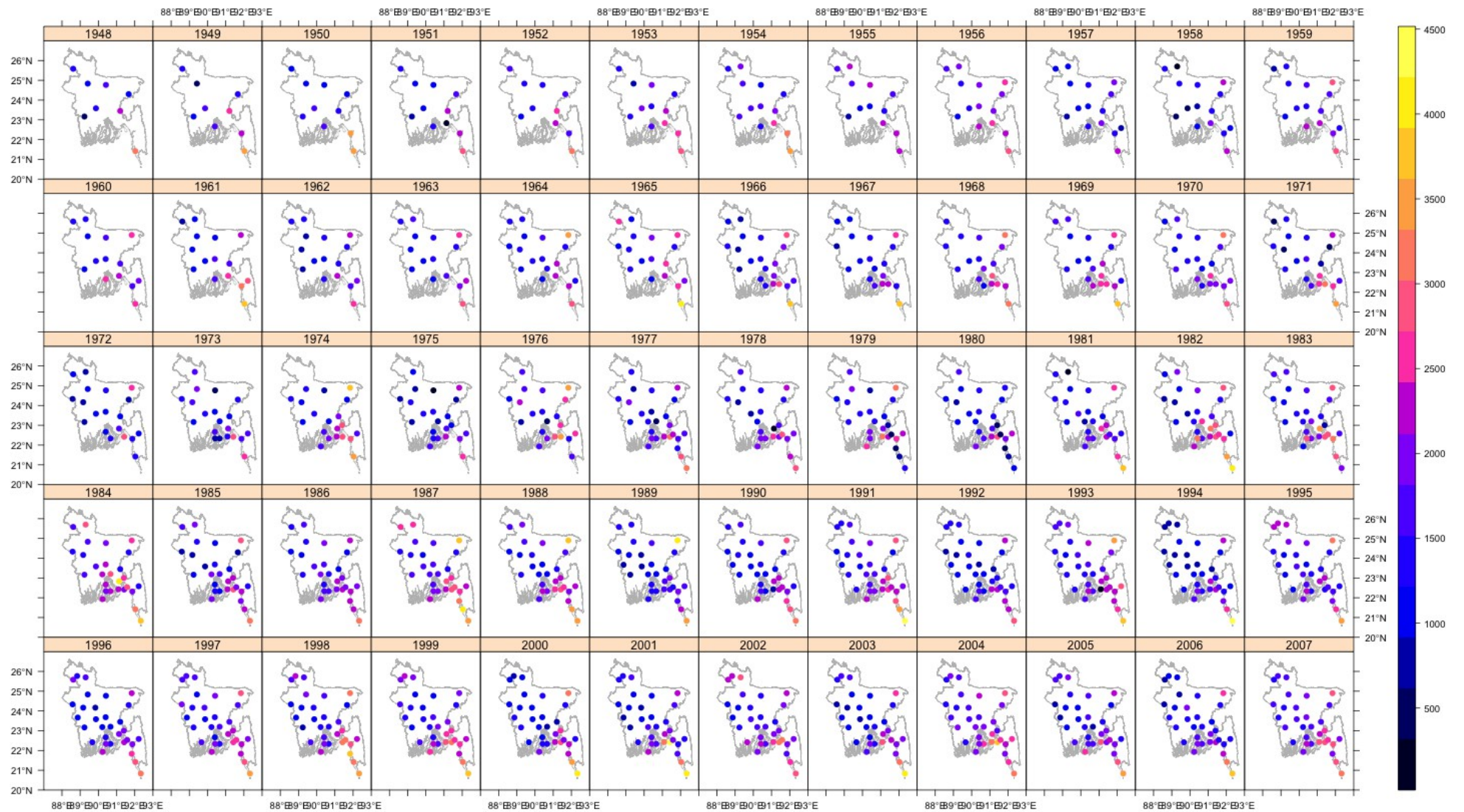


Figure S1. Spatial location of the data points (rain-gauge) where precipitation observations were available for each year and computed annual total precipitation in hydrological wet days (PRCPTOT) value (in mm).

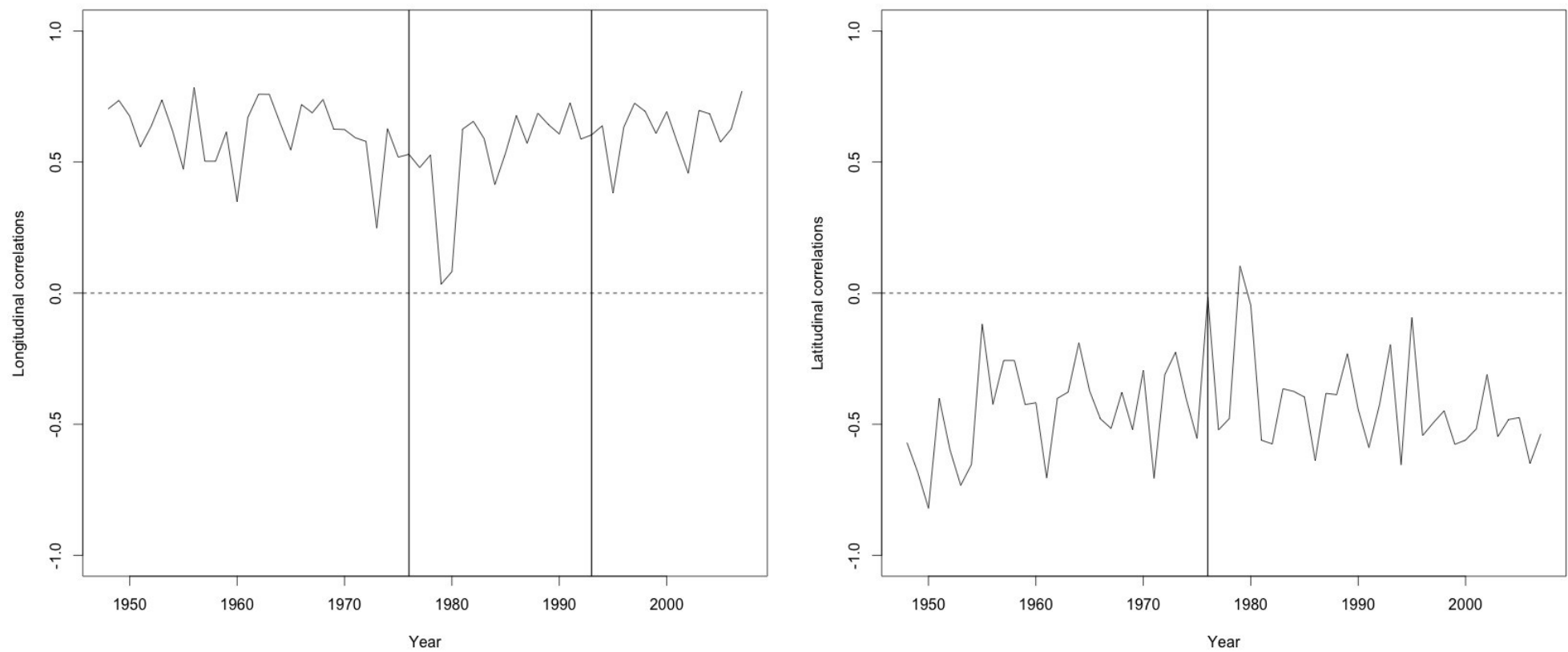


Figure S2. Statistically significant change points in the spatial correlations of annual total precipitation in hydrological wet days (PRCPTOT) along the longitudinal (left) and latitudinal (right) gradients within the 1948-2007 series.